

PLÁTKY

Mačkárenské *tyče*

PRECIOSA

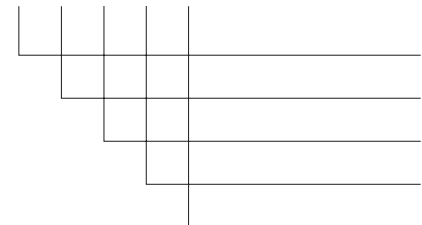
Mačkárenské tyče - plátky

Sortimentní škála, stejně jako mimořádná kvalita skla, barevná konzistence a odstínová pestrost tyčí PRECIOSA Traditional Czech Glass nemají obdoby nikde na světě.

Transparentní a sytá skla

System číselných symbolů

X X X X X



1. místo - základní barva

- 0 - křišťál a bílá
- 1 - hnědá
- 2 - fialová
- 3 - modrá
- 4 - šedá
- 5 - zelená
- 6 - akvamarín
- 7 - růžová
- 8 - žlutá
- 9 - červená

2. místo - druhy skel

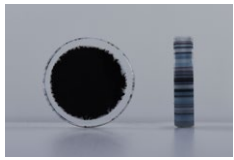
- 0 - čiré barevné sklo (transparentní)
- 1 - opálové sklo
- 2 - alabastrové sklo
- 3 - syté (opakní) sklo
- 4 - sklo s hedvábným leskem
- 5 - achátové a atlasové sklo
- 6 - měsíční svit
- 7 - přetahy
- 8 - proužky



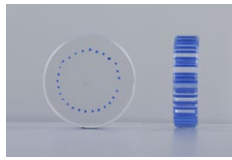




05000



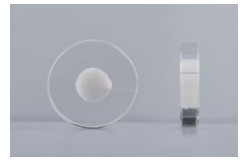
05002



05010



05814



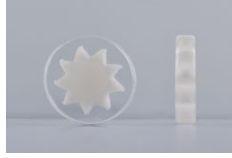
05816



06000



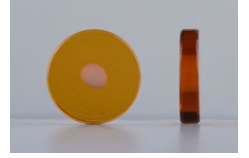
06006



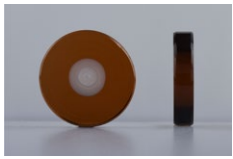
06007



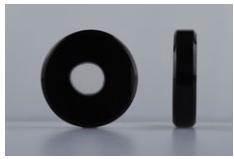
06008



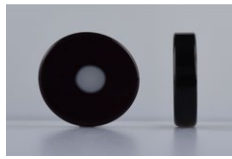
06108



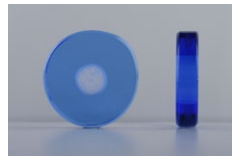
06118



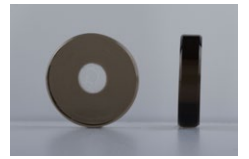
06128



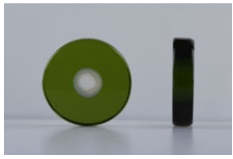
06208



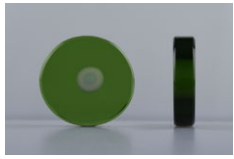
06308



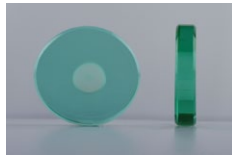
06418



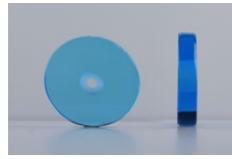
06508



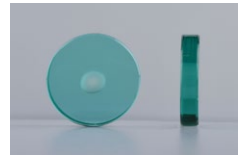
06518



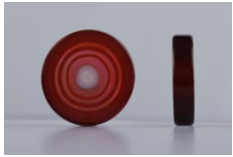
06528



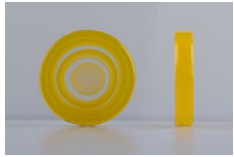
06608



06628



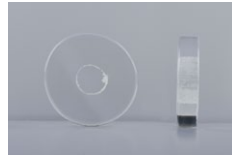
06708



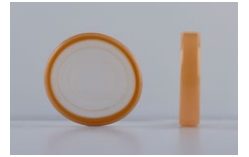
06818



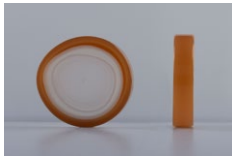
06918



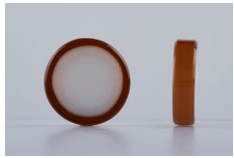
07081



07104



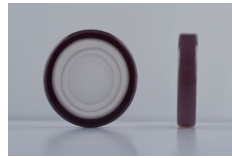
07114



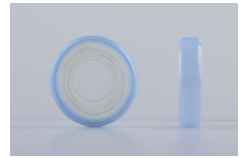
07133



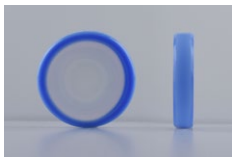
07193



07224



07304



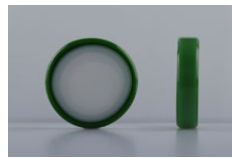
07314



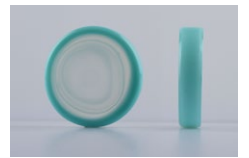
07334



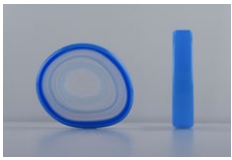
07424



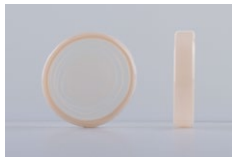
07504



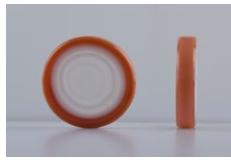
07524



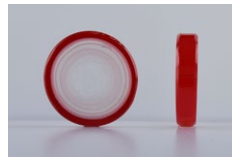
07624



07704



07724



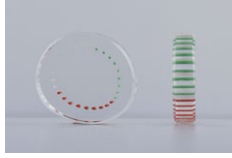
07913



08001



08006



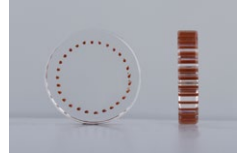
08050



08071



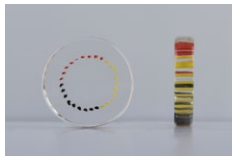
08079



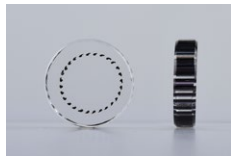
08101



08201



08280



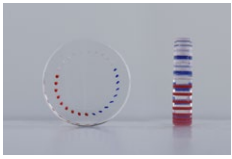
08291



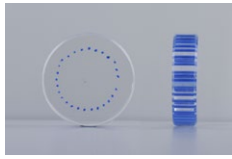
08292



08293



08300



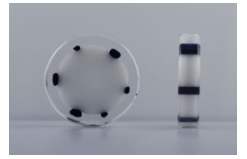
08301



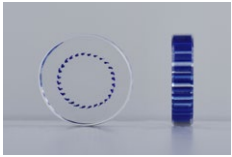
08302



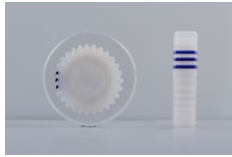
08303



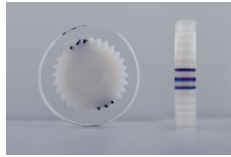
08305



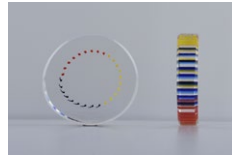
08311



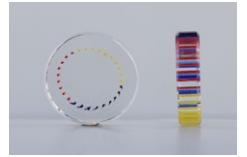
08317



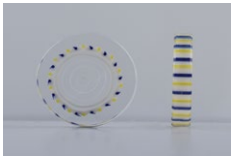
08327



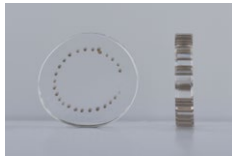
08380(2)



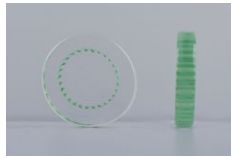
08380



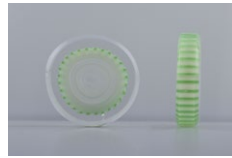
08382



08401



08501



08502



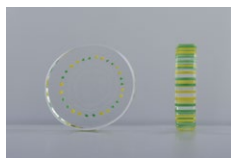
08512



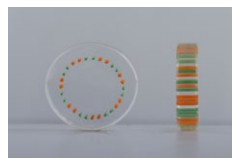
08527



08581



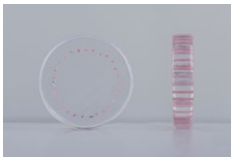
08589



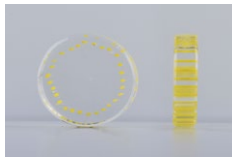
08599



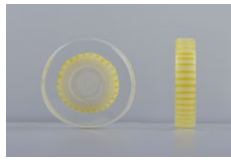
08602



08701



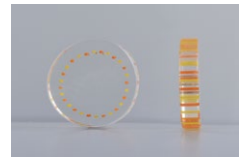
08801



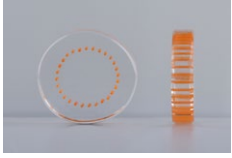
08802



08829



08891



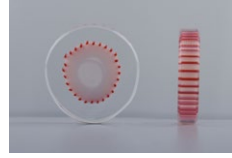
08901



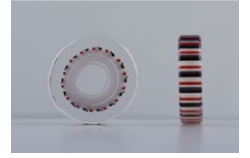
08902



08911



08912



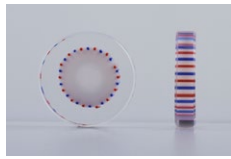
08922



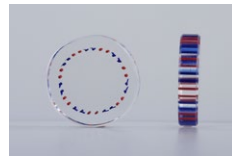
08927



08929



08932



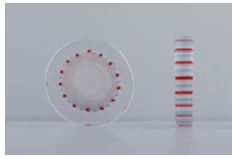
08939



08951



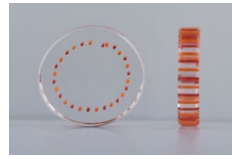
08952



08962



08981



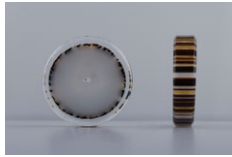
08991



15000



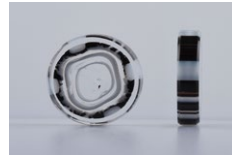
15004



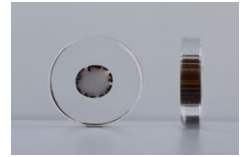
15010



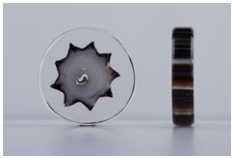
15014



15015



15016



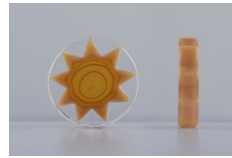
15027



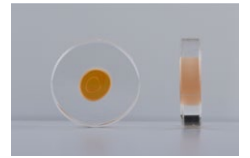
15033



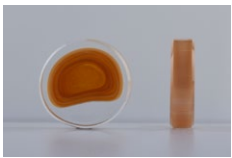
16006



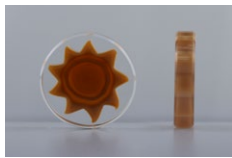
16007



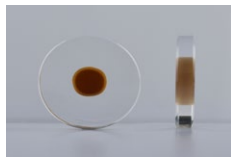
16008



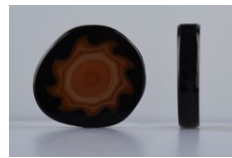
16010



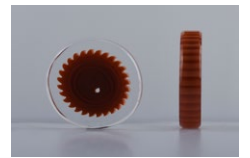
16017



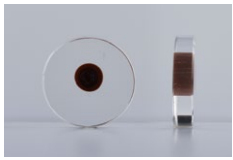
16028



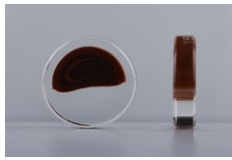
16127



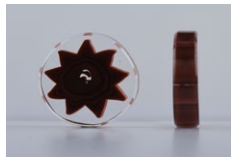
16606



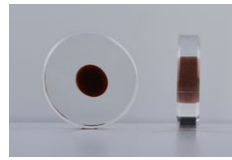
16608



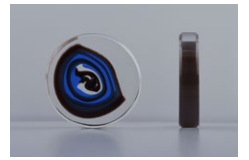
16610



16617



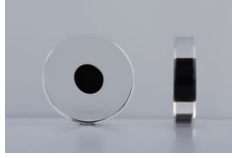
16618



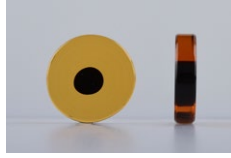
16620



17002



17008



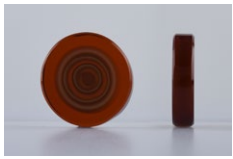
17011



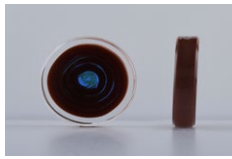
17019



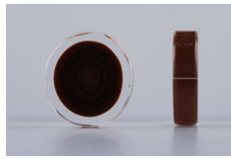
17025



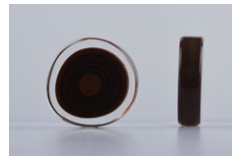
17113



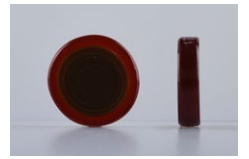
17602



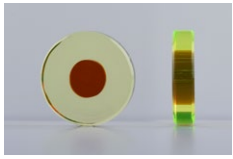
17612



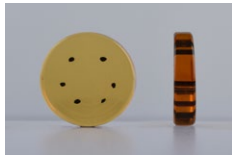
17622



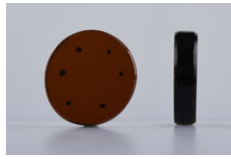
17713



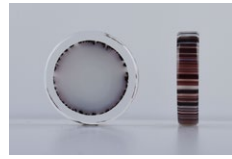
17801



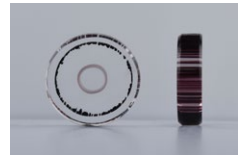
18016



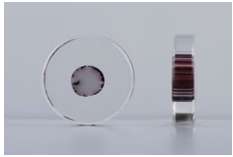
18036



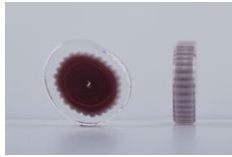
25000



25014



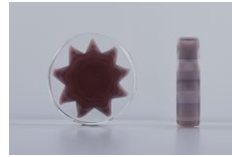
25016



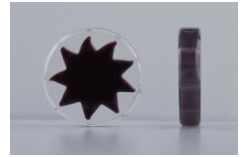
26006



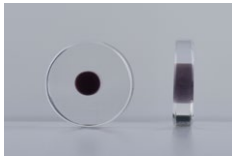
26016



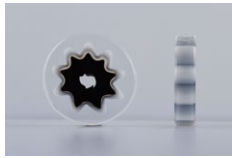
26017



26027



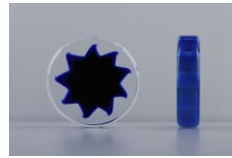
26028



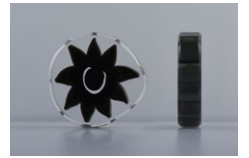
26067



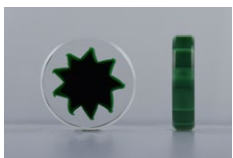
26117



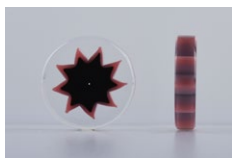
26307



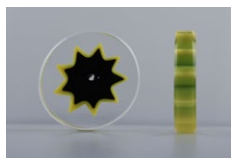
26407



26507



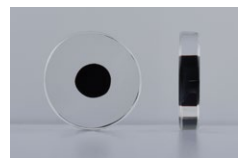
26707



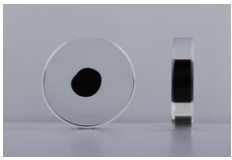
26807



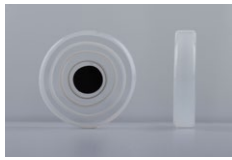
26907



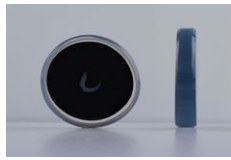
26998



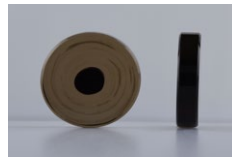
27008



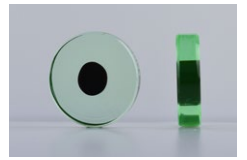
27011



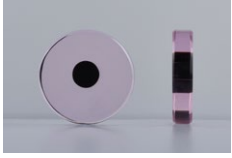
27021



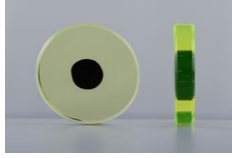
27401



27501



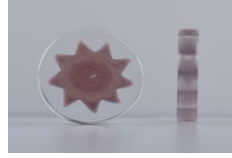
27701



27801



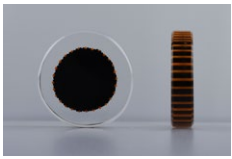
27928



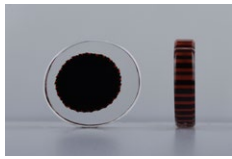
28007



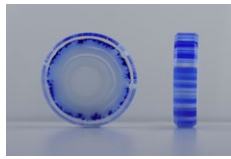
28032



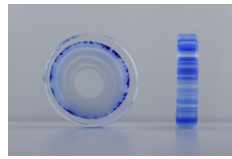
28902



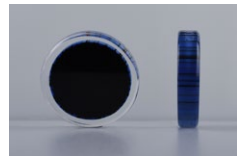
28912



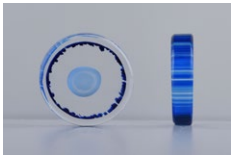
35000



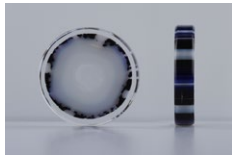
35010



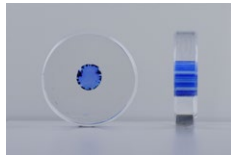
35012



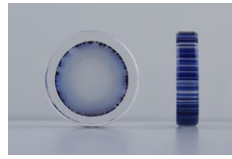
35014



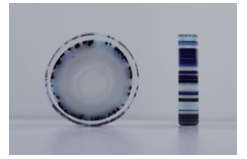
35015



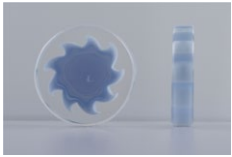
35016



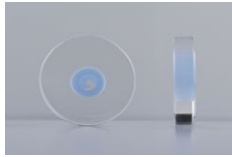
35020



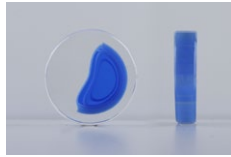
35033



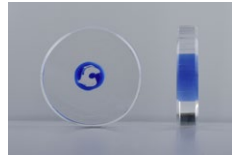
36007



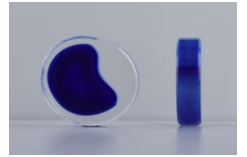
36008



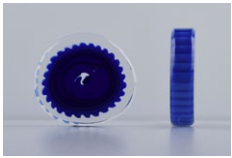
36010



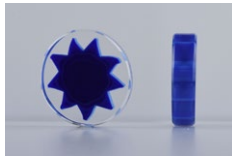
36018



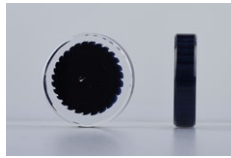
36020



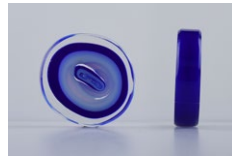
36026



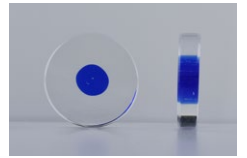
36027



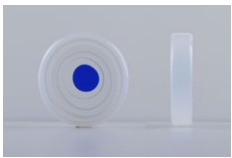
36036



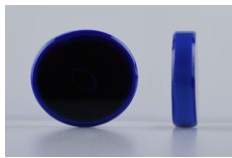
37005



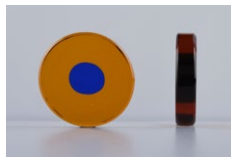
37008



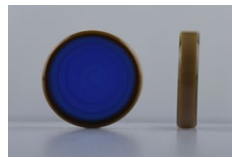
37011



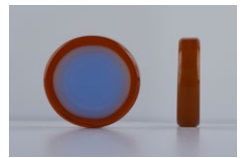
37029



37101



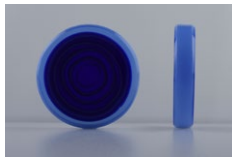
37114



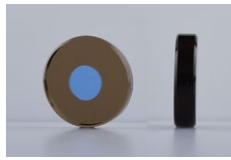
37193



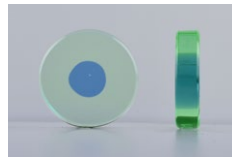
37306



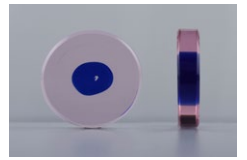
37356



37401



37501



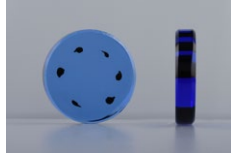
37701



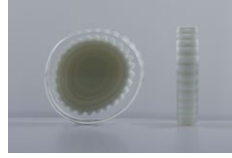
37724



37913



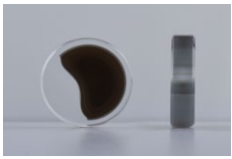
38036



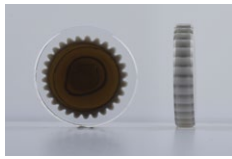
46006



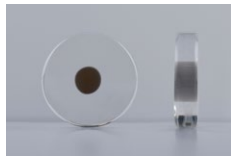
46007



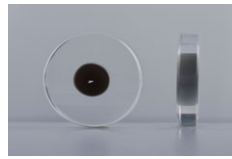
46010



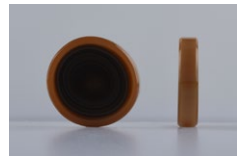
46016



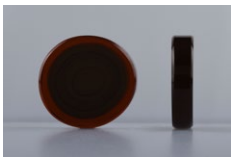
46018



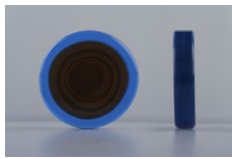
46028



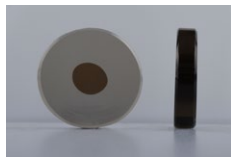
47114



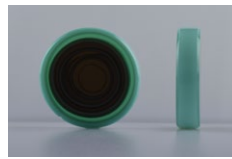
47193



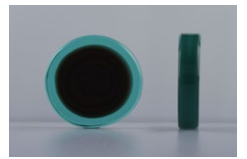
47353



47401



47514



47603



55000



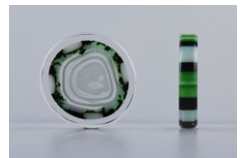
55004



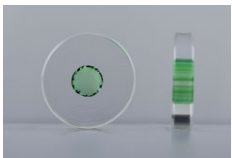
55010



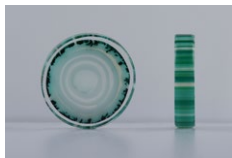
55012



55015



55016



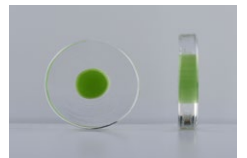
55020



56000



56006



56008



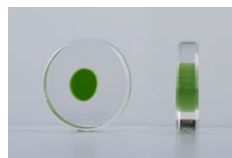
56010



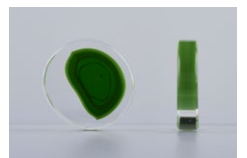
56016



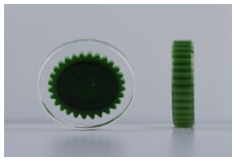
56017



56018



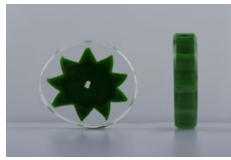
56020



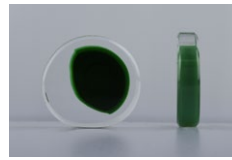
56026(2)



56026



56027



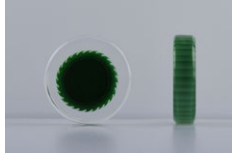
56100



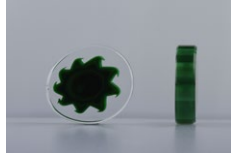
56106



56110



56116



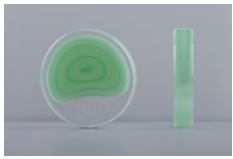
56117



56118



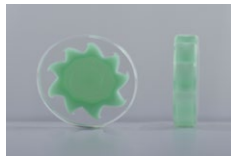
56126



56200



56206



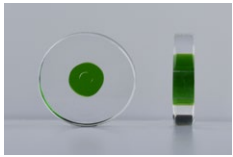
56207



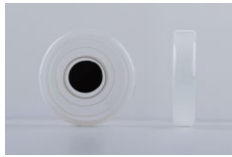
56208



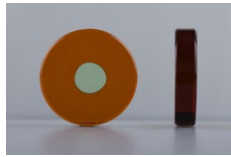
56217



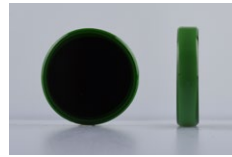
57008



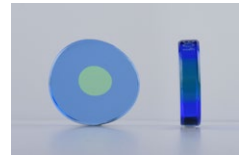
57011



57101



57109



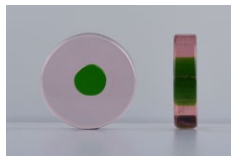
57301



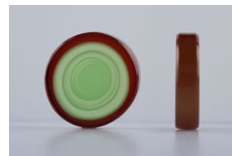
57334



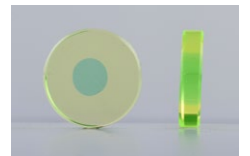
57506



57711



57713



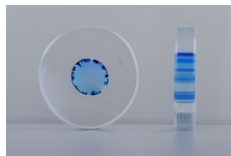
57801



57993



65000



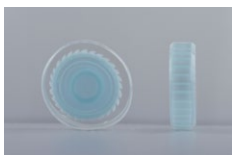
65016



65810



65814



66006



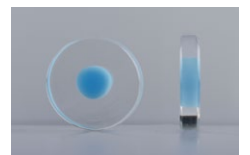
66008



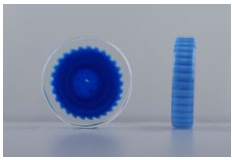
66010



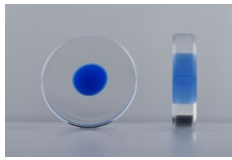
66016



66018



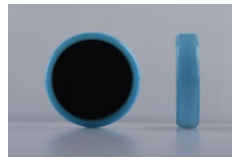
66026



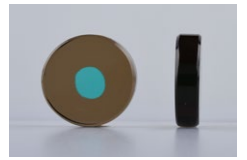
66028



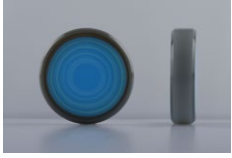
67011



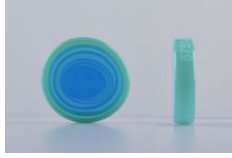
67019



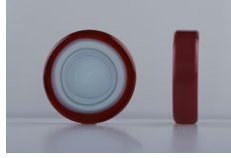
67401



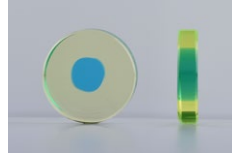
67414



67514



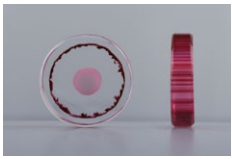
67713



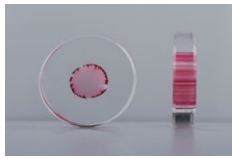
67801



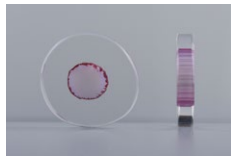
75010



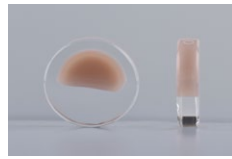
75014



75016(1)



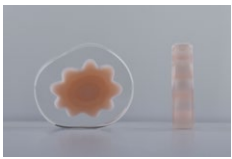
75016



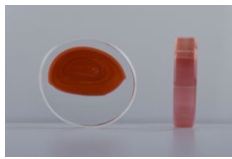
76000



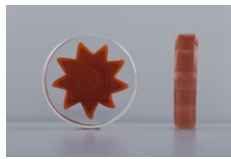
76006



76007



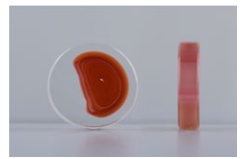
76010



76017



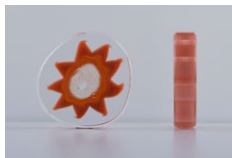
76018



76020



76026



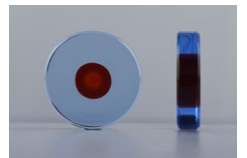
76027



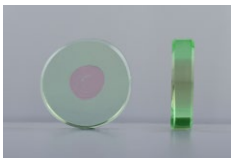
77029



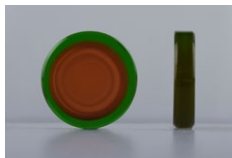
77193



77301



77501



77553



77603



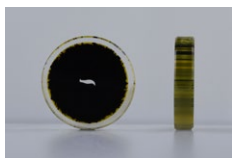
77617



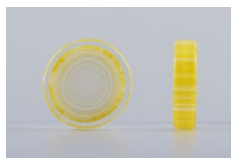
77713



78126



85002



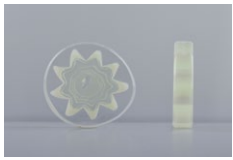
85010



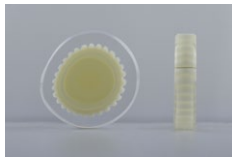
85033



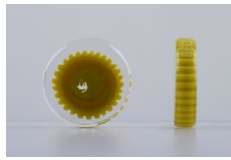
86000



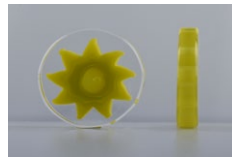
86007



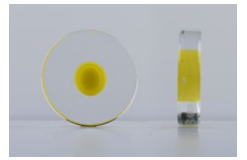
86016



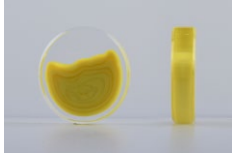
86026



86027



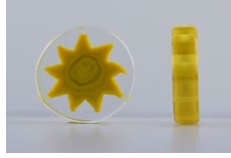
86028



86030



86036



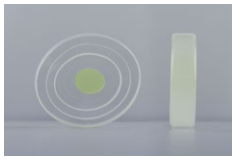
86037



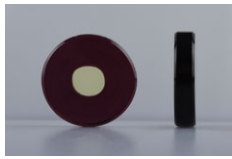
86038



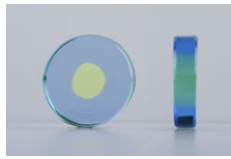
86040



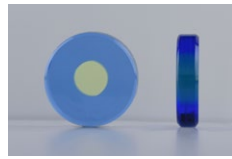
87011



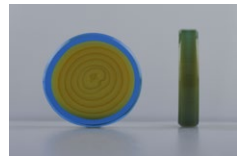
87201



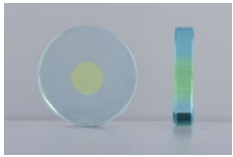
87301



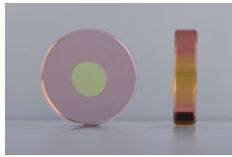
87311



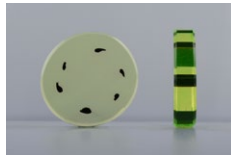
87353



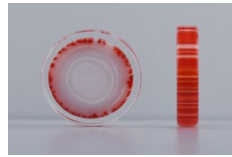
87601



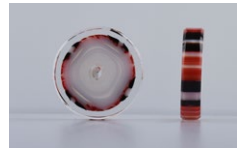
87701



88126



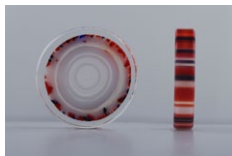
95000



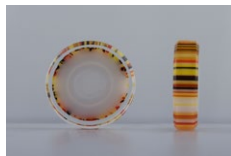
95015



95016



95333



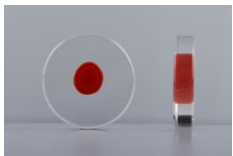
95810



96000



96010



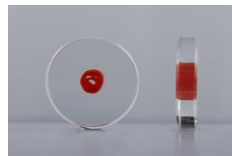
96018



96026



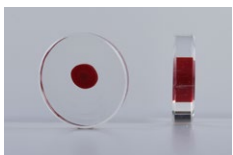
96027



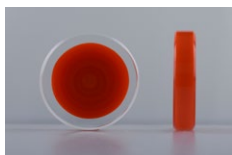
96028



96680



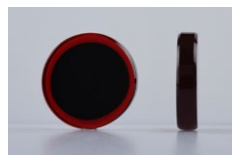
97008



97012



97022



97259



PRECIOSA Traditional Czech Glass

člen skupiny Preciosa

Preciosa, přední světový výrobce skla a křišťálu, svou produkcí celosvětově známých českých perliček a křišťálových kamenů, používaných v módním průmyslu, až po unikátní projekty osvětlení vytvořené pro luxusní hotely, královské paláce a jachty navazuje na tradici sklářského řemesla, která započala v Křišťálovém údolí již v 16. století.

Preciosa-Ornela.com