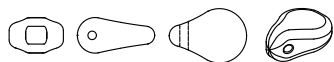




Design by Helena Chmelíková

PRECIOSA Pip™
111 01 346; 5 x 7 mm



PRECIOSA Rocailles
331 19 001; 10/0; 11/0



*Preciosa Ornela introduces beads and seed beads
from the PRECIOSA Traditional Czech Beads™ brand.*

Preciosa-Ornela.com



RING SEWN ONTO A METAL SIEVE

Flower Bed

PRECIOSA

Flower Bed

You will be able to blossom whenever you wish. You can have your very own flower bed. Just choose from the PRECIOSA Flower pressed beads. Use the following tutorial to create an enchanting ring.

Materials and tools:

THE YELLOW VARIANT

PRECIOSA flower (F)

111 33 022; 9 mm;

02010/54320 alabaster-yellow; 4x



PRECIOSA Pip™ (P)

111 01 346; 5 x 7 mm;

02010/25025 light green; 4x



PRECIOSA Rocailles

331 19 001; 11/0;

37386 yellow; 16x (R1)



331 19 001; 10/0;

88110 yellow; 4x (R2)



THE BRONZE VARIANT

PRECIOSA flower (F)

111 33 022; 9 mm;

02010/96802 beige-yellow; 4x



PRECIOSA Pip™ (P)

111 01 346; 5 x 7 mm;

02010/26443 gold; 4x



PRECIOSA Rocailles

331 19 001; 11/0;

59142 bronze; 16x (R1)



331 19 001; 10/0;

88110 yellow; 4x (R2)



- a sieve with a 16 mm circumference and 8 holes; a ring with a 16-18 mm base



- a 0.20 mm nylon line; a thin needle; scissors; hot-melt glue and a glue gun



Difficulty: ●●●●●

Procedure:

Step 1:

Tie the line to the sieve. Thread the line through one of the holes from below and return to the bottom through another hole. Tie a knot on the bottom (in the dimple). Use the longer side to sew the material onto the back.



Step 2:

Sew on 4x F one at a time. Thread the line through the outer hole in the place where it forms a square with the surrounding holes. Place the F to the left. Thread the line through one hole in the next one.



Step 3:

Sew all four F. Tie both parts of the line together on the bottom.



Step 4:

Place 4x P one at a time at the edges of the sieve between the F. Thread the line through the hole under the edge of the F. String a P. Thread the line through the next hole under the edge of the adjacent F.



Step 5:

Sew on all the P. Tie off the line on the bottom of the sieve.



Step 6:

Thread the line through the F one more time and tighten it. Tie it off.

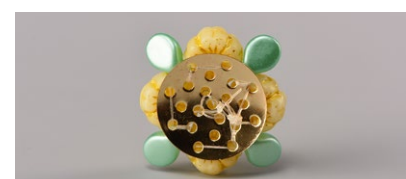
Step 7:

Sew the „pistils“ to the four holes around the central hole. Thread the line through 4x R1 and 1x R2. Thread the line back through all R1.



Step 8:

Create all four „pistils“. Tie off and cut.



Step 9:

Use the hot-melt glue to adhere the sieve to the base of the ring.

