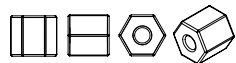


Design by Helena Chmelíková

PRECIOSA Two-Cut

351 31 001; 10/0



PRECIOSA Rocailles

331 19 001; 10/0



Preciosa Ornela introduces beads and seed beads from the PRECIOSA Traditional Czech Beads™ brand.

Preciosa-Ornela.com



AN EMBROIDERED PENDANT

Apple orchard

PRECIOSA

Apple orchard

Have you ever tried to embroider using PRECIOSA beads and seed beads? Now you can. We have prepared a beginners tutorial for you with the spring mood of a blossoming orchard. Create a simple, appealing accessory out of PRECIOSA Two-Cut and pressed beads in the shape of delicate little flowers.

Materials and tools:

PRECIOSA Forget-me-nots (PB)
111 01 362; 5 mm;
03191 pink; 11x

00030/01193 transparent pink; 4x

PRECIOSA Two-Cut (TC)
351 31 001; 10/0;
17110 dark brown; 30 - 35x

PRECIOSA Rocailles (R)
331 19 001; 10/0;
57206 ivory; 15x

- a thin LIO4-0002-01 (white - PB)
and LIO4-0002-08 (Bordeaux - TC)
nylon thread; a thin needle; scissors



- thin fabric (white, ivory or cream);
thin fusible interlining; sewing scissors;
pliers; a transparent sheet of paper;
a regular pencil; a dark felt tip;
a 10-15 cm wide sewing frame;
a decorative wooden frame - a pendant
with an internal wooden disc
(a ring - a diameter of 40 mm,
oval - 31 x 67 mm); thermal interlining;
dispersive glue; a rubber band;
an 8 - 10 mm ring; sticky tape, a ruler



Difficulty: ●●●●●

Technique: embroidery (a rocaille knot,
a tacking stitch)

Procedure:

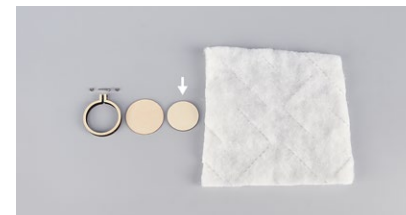
Step 1:
Iron the fusible interlining onto the fabric
(the shiny side is placed on the rear
of the fabric). Warm the iron for synthetic
materials. The piece of fabric must
be bigger than the embroidery frame.



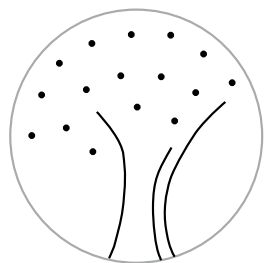
Step 2:
Place the embroidery frame's internal ring
under the fabric. Press the outer ring
over the inner ring from the front of the fabric.
Tighten the screw (if you have a frame with
a screw). Use the pliers. The fabric must
be taut.



Step 3:
Adhere the internal wooden circle from
the decorative frame to the thermal
interlining. Once dried, cut
off the interlining around the circle.



Step 4:
Trace the drawing with the placement
of the PB and TC onto the fabric.
The grey circumference corresponds
to the size of the internal wooden disc
(a 33 mm circle, 27 x 55 mm oval).
Trace the black points and lines onto
the paper (using the transparent sheet
of paper and the felt tip). Or cut it out from
the used decorative frame
(a 33 mm circle, 27 x 55 mm oval).
Trace the black points and lines onto
the paper (using the transparent sheet
of paper and the felt tip). Use a regular pencil
to do so. Attach it to the rear of the fabric
using sticky tape. Place the frame against
a window and trace around the sketch
on the rear. The transition of daylight will
help you.

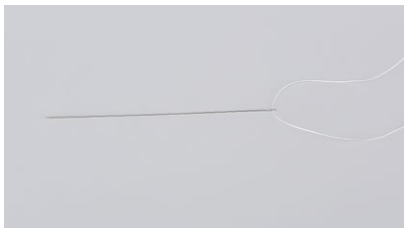
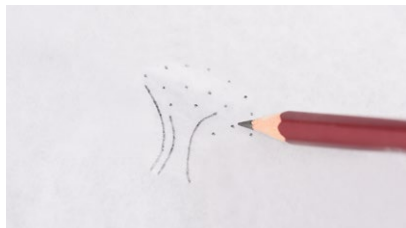
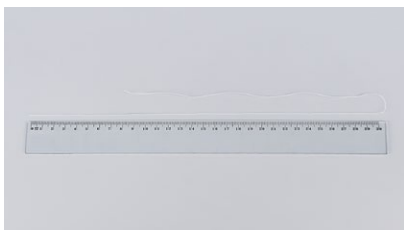


3,3 cm

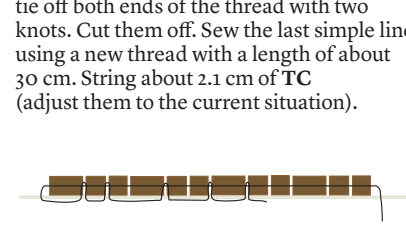
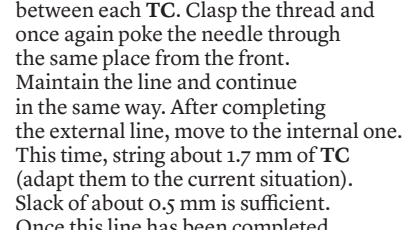
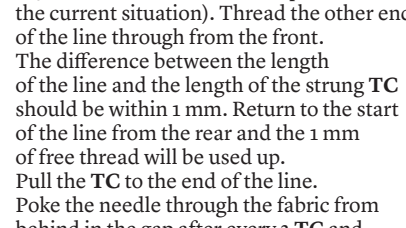
Step 5:
Sew on the **PB** (the rocaille stitch).
Cut off about 50 cm of white thread.
Cut it off diagonally. String it into the eye of the needle. Poke through the 1st point in the drawing from the rear. Leave about 15 cm of thread free. String 1x **PB** and 1x **R** onto the longer part of the thread at the front of the fabric. Thread the line back through the **PB** to the rear. Continue to the next points and add the **PB** and **R**. Sew the ends of the thread in once all the points have been filled.
Thread the line under the stitches at the other points. Create a loop in the thread and thread it through it twice. Create a knot. Cut it off.

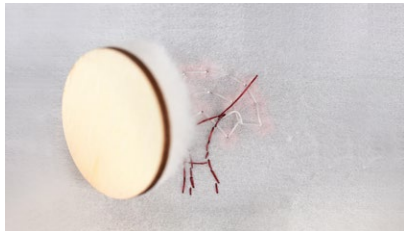


The actual size of the drawing when printed

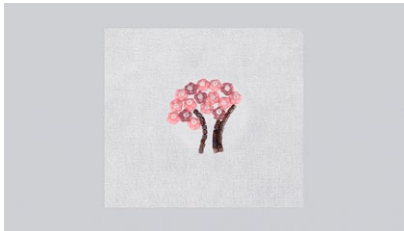


Step 6:
Embroider the trunk (tacking stitch).
Start at the double line. Cut off about 40 cm of thread. Tie a double knot about 10 cm from the start of the thread.
Thread through the start of the outer line at the **PB** from the rear. String about 2.4 cm of **TC** on the front (adapt them to the current situation). Thread the other end of the line through from the front.
The difference between the length of the string **TC** should be within 1 mm. Return to the start of the line from the rear and the 1 mm of free thread will be used up.
Pull the **TC** to the end of the line.
Poke the needle through the fabric from behind in the gap after every 2 **TC** and between each **TC**. Clasp the thread and once again poke the needle through the same place from the front.
Maintain the line and continue in the same way. After completing the external line, move to the internal one.
This time, string about 1.7 mm of **TC** (adapt them to the current situation). Slack of about 0.5 mm is sufficient.
Once this line has been completed, tie off both ends of the thread with two knots. Cut them off. Sew the last simple line using a new thread with a length of about 30 cm. String about 2.1 cm of **TC** (adjust them to the current situation).





Step 7:
Remove the embroidered picture from the frame. Underlay it with the circle prepared with the interlining (Step 3). Press on the outer decorative frame. Tighten the nut on the screw. Cut the fabric off about 0.5 - 1 cm from the frame.



Step 8:
Pull the fabric to the centre of the circle using the thread. Sew through the adjacent edges and pull them together.



Step 10:
Release the screw once the glue has dried. Insert a ring with a prepared cord or hanger. Replace the screw.

Step 9:
Apply glue to the rear of the frame. Also apply it to the fabric. This will definitively secure the picture in the frame. Put on the larger wooden circle. Secure it with the rubber band until the glue dries.

