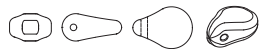




*Design by Helena Chmelíková*

**PRECIOSA Pip™**

111 01 346; 5 x 7 mm



**PRECIOSA Rocailles**

331 29 001; 10/0



**PRECIOSA Cut Rocailles**

361 11 001; 13/0



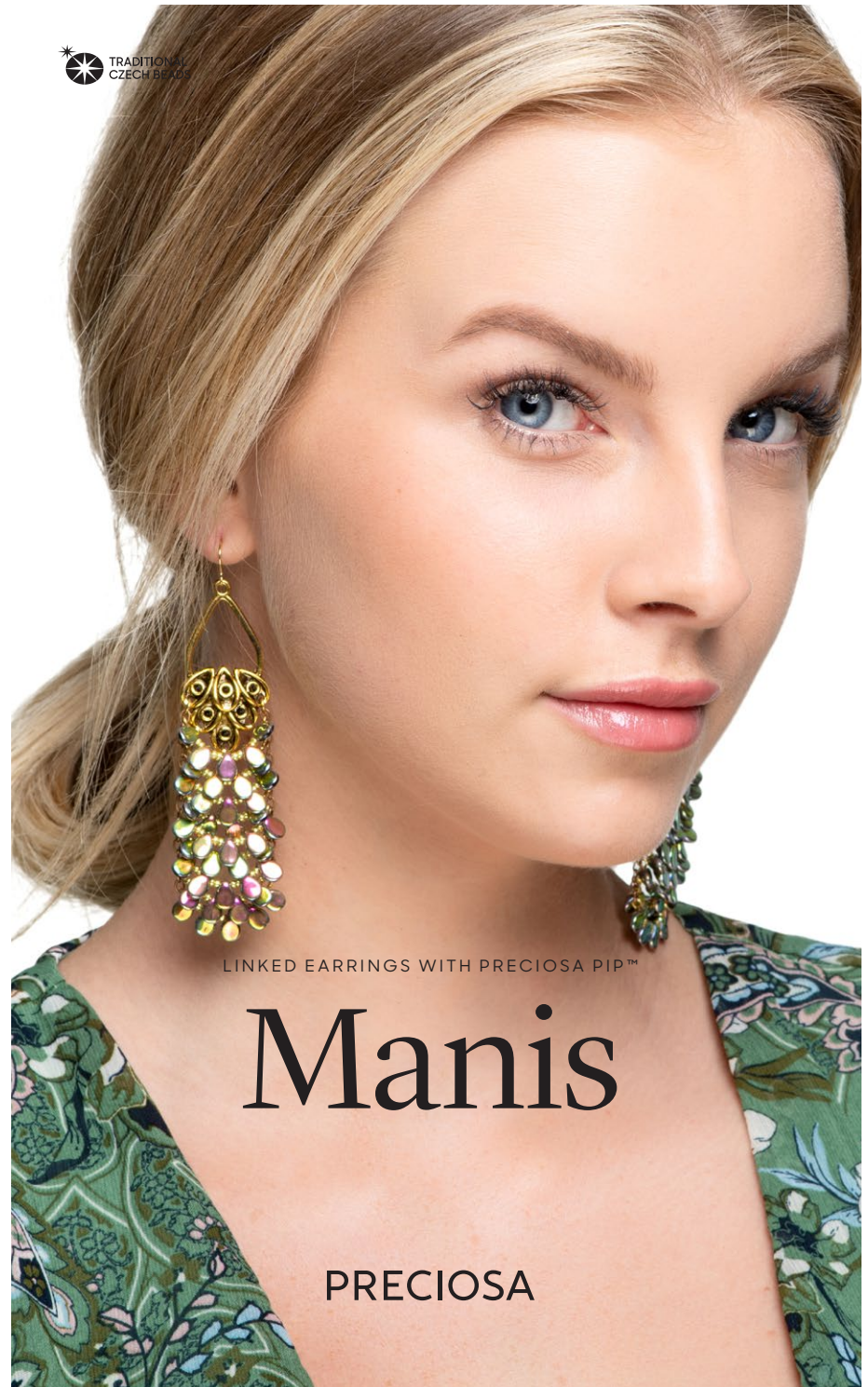
**PRECIOSA Rocailles**

331 19 001; 10/0



*Preciosa Ornela introduces beads and seed beads from the PRECIOSA Traditional Czech Beads™ brand.*

Preciosa-Ornela.com



LINKED EARRINGS WITH PRECIOSA PIP™

**Manis**

**PRECIOSA**

# Manis

PRECIOSA Pip™ pressed beads from the PRECIOSA Traditional Czech Beads™ brand conforms to the current trend for mini beads with its dimensions of 5 x 7 mm. Its axially symmetrical flattened shape resembling a small pip enables the realisation of vacuum metallic half-coatings with the resulting effect of an all-over decoration. Try using this universal bead to create a pair of original earrings using this tutorial.

## Materials and tools:

### Gold earrings

PRECIOSA Pip™ (P)  
111 01 346; 5 x 7 mm;  
23980/28103; 82x



### PRECIOSA Cut Rocailles (R)

361 11 001; 13/0;  
18586; 160x



### Copper earrings

PRECIOSA Pip™ (P)  
111 01 346; 5 x 7 mm;  
00030/98533; 82x



### PRECIOSA Rocailles (R)

331 29 001; 10/0;  
27060; 160x



### Silver earrings

PRECIOSA Pip™ (P)  
111 01 346; 5 x 7 mm;  
02010/14400; 82x



### PRECIOSA Rocailles (R)

331 19 001; 10/0;  
57206; 160x



- a metal arm; a chain (10 links, about 2.7 cm); 50 mm eye pins; 4 mm rings; earring hooks or butterfly backs



- needle nose pliers; flat nose pliers (closing the rings, straightening the links)



**Difficulty:** ○○○○○

**Technique:** linking, string

### Procedure:

#### Step 1:

Link ten arches (5 for one earring). String 1x P, 2x R, 1x P, 2x R, 1x P, 2x R, 1x P, 2x R and 1x P onto an eye pin. Adjust the twist to the lower edge of the metal arm. Link the second eye on the eye pin. Squeeze the eye pin about 8 mm from the P. Grasp the end of the eye pin between the points of the needle nose pliers. Twist it around the point. Gently fold the eye pin back under the eye. The eyes are turned perpendicularly to the flat P.



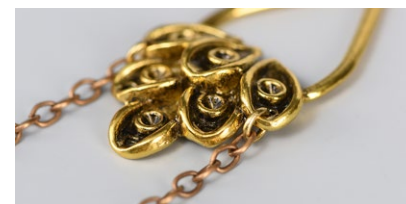
#### Step 2:

Link eight arches (4 for each earring). String 2x R, 1x P, 2x R, 1x P, 2x R, 1x P, 2x R, 1x P and 2x R onto an eye pin. Twist it. Link the second eye.



#### Step 3:

Cut off two lengths of chain with 17 links. Place a linked arch next to the lower edge of the metal arm. Attach the chains to the arm at the site of the eyes in the arches using rings.

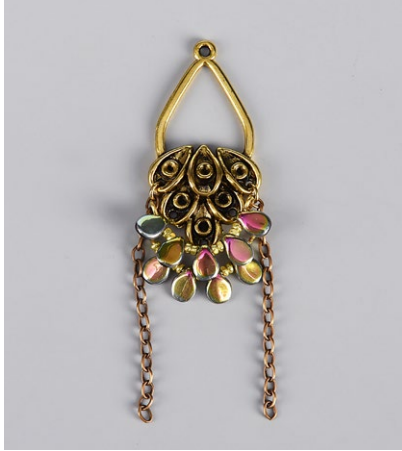
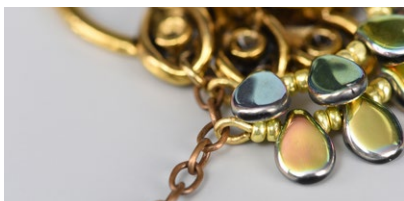




Step 4:  
Slightly open an eye on one arch from Step 1. Hang it in the first link of the chain under the ring. Close the eye. Open the second eye of the arch. Hang it in the first link under the second ring. Close.



Step 5:  
Hang an arch from Step 2 in the third chain link.



Step 6:  
Alternately hang the arches from Step 1 and Step 2 into each second chain link.



Step 7:  
Hang the earring on an earring hook or on a butterfly back. You can use a ring for this.

