



Design by Helena Chmelíková

PRECIOSA Tree-Cut Beads

361 31 001; 9/0



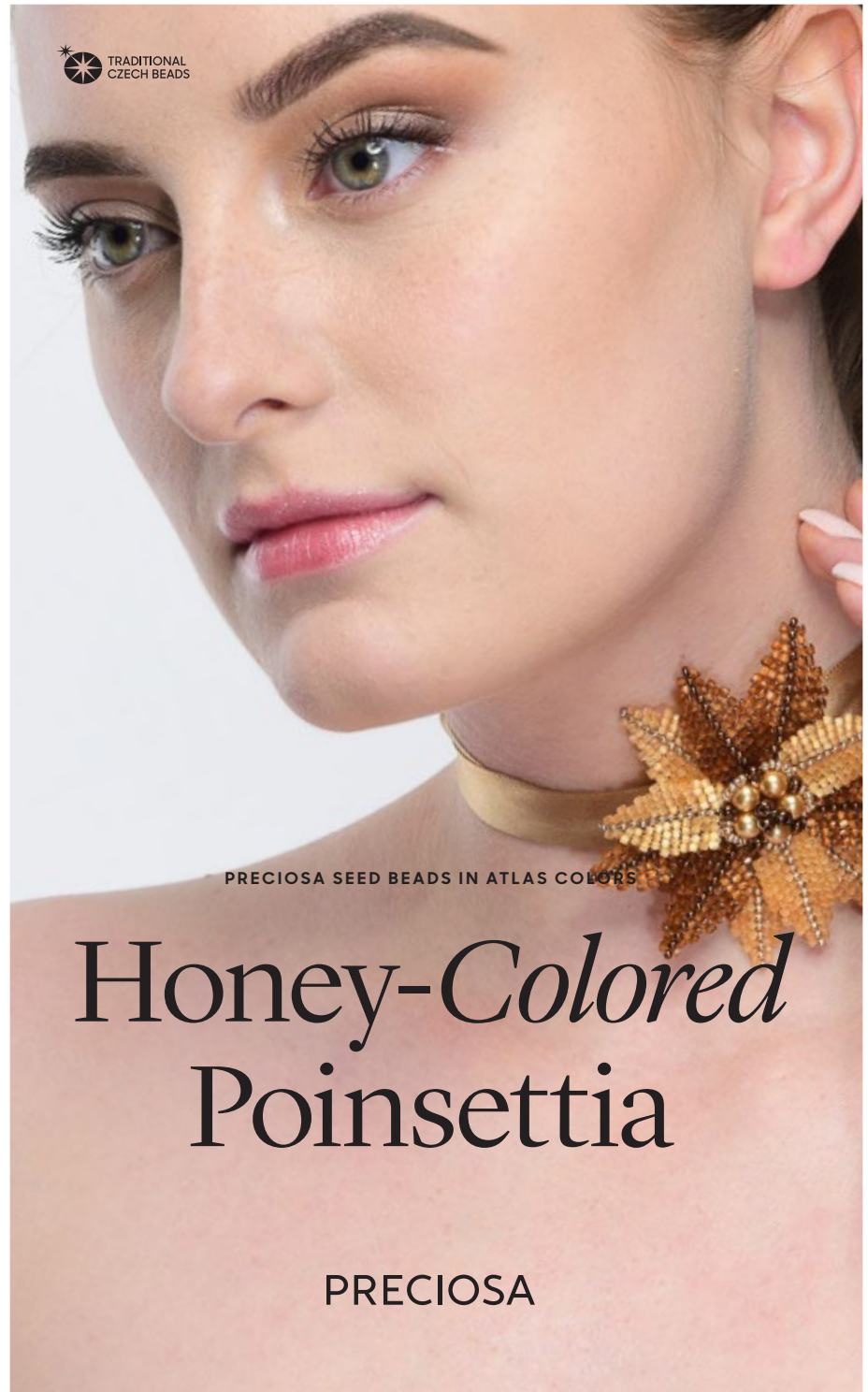
PRECIOSA Rocailles

331 19 001; 10/0; 6/0



Preciosa Ornela introduces beads and seed beads from the PRECIOSA Traditional Czech Beads™ brand.

Preciosa-Ornela.com



PRECIOSA SEED BEADS IN ATLAS COLORS

Honey-Colored Poinsettia

PRECIOSA

Honey- Colored Poinsettia

The leaves of a poinsettia, sewn using the peyote stitch with atlas three-cut beads and rocailles from the PRECIOSA Traditional Czech Beads™ brand, make excellent use of the refined effect created by unique atlas glass. This tutorial will enable you to create an elegant brooch in atlas colors. Thanks to the range of colors and surface finishes on PRECIOSA seed beads, you can create various tone-in-tone color combinations and thus refresh your wardrobe with a range of unique accessories.

Preciosa Ornela wishes you many creative ideas and much inspiration when working with our beads and seed beads.

Materials and tools:

PRECIOSA Three-Cut Beads (Th-C)
361 31 001; 9/0; 15041; 546x



361 31 001; 9/0; 15101; 390x



PRECIOSA Rocaïlles
331 19 001; 10/0; 59145; 84x (R10)



331 19 001; 6/0; 59145; 8x (R6)



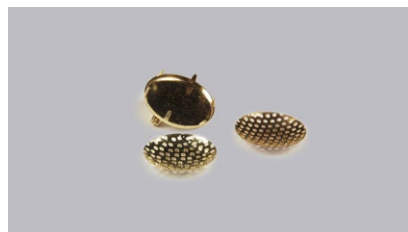
331 19 001; 10/0; 18583; 105x (R10)



PRECIOSA Imitation Pearls (IP)
131 19 001; 6 mm; 70686; 5x



Metal parts: gold a 20 mm brooch sieve,
gold a 22 mm circle with a brooch clasp



Other: a golden ribbon
(width: 2.6 cm, 70 cm)



A 0.20 mm nylon line,
a thin needle, scissors,
flat nose pliers (for flattening
the line before threading it into
the needle),
a flat spike (or you can use
the point of the closed scissors or one
of the points of the flat nosed pliers)



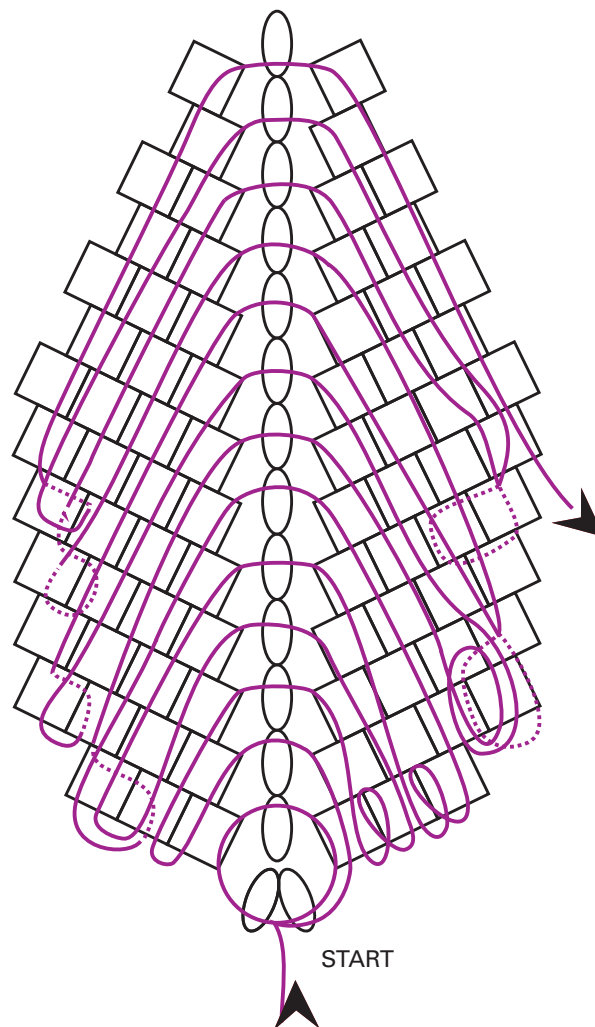
Difficulty: ●●●●●

Technique: sewing (the peyote stitch)

Procedure:

Step 1:
Create 5 brown leaves (15101) with
a central bronze rib (59145))
and 7 honey-colored leaves (15041)
with a central gold rib (18583) .

1.



Sew the individual poinsettia leaves using the peyote stitch.
 Start by stringing and tying
 5x seed beads:
 1x **R10**, 1x **Th-C**, 1x **R10**, 1x **Th-C**
 and 1x **R10**. Tie them off. Thread the needle
 and line through 1x **R10** and 1x **Th-C**.
 From now on, you should follow
 the illustration (fig. no. 1).

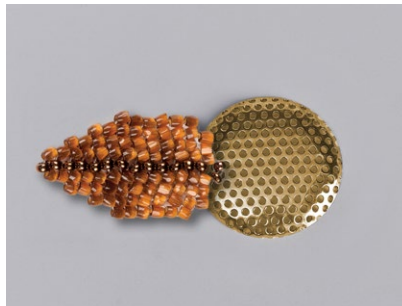
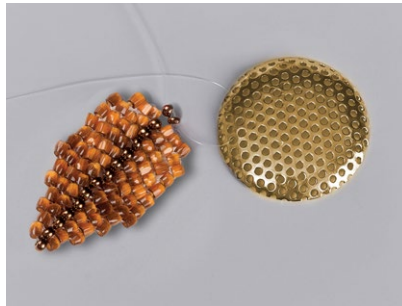
Add 3x seed beads to the centre of the row.

Thread the needle and line through 1x **R10**,
 1x **Th-C**, 1x **R10** and 1x **Th-C**.
 Thread the needle and line through
 the 1x **Th-C** next to the 1x **R10**.

Now start to make the first side.
 String 1x **Th-C** and thread the needle
 and line into the side **Th-C** of the three
 which have been added. Add another 3x
 seed beads and thread the needle and line
 into the hole of the second side **Th-C**
 from those you have added.

Start working on the second side.
 Thread the line from one side to the other
 and create the point by adding 3x seed
 beads in the centre of the leaves.
 Otherwise they are added one at a time.
 Caution: the threading of the outer **Th-C**
 on the sides is rather difficult in some cases!

Step 2:
 Notionally divide the brooch sieve into
 6 segments. Sew the bottom row of a leaf
 onto the edge of the sieve in each segment.
 Fasten the leaves to the nylon between
 the two metal-coated rocailles.
 Initially tie the nylon to the sieve from
 the rear. Then thread the line through from
 the bottom using a hole at the edge, fasten
 the nylon between the rocailles and then
 thread the line back through the same hole.
 Also attach each leaf behind both rocailles
 next to the gap. Thread the line through
 the nearest hole of the metal sieve and
 the rocaille and then thread the line back
 into the hole. Carry out the same process
 with the second rocaille. Also pull the
 remaining end of the line from the leaf into
 the nearest hole. You can tie it to the line
 used to sew on the leaves and thus reinforce
 the sewn connection.
 Continue to the next leaf.



Step 3:
 Place the leaves in the second upper row
 on the bottom leaves' join. Also sew them
 on in the gaps between the metal-coated
 rocailles. Thread the line up from
 the bottom in the area between the bottoms
 of the lower leaves. Attach the nearest
 metal-coated rocaille from the rib
 of the top leaf and thread the line back into
 the hole. Repeat this procedure 6x.
 The leaves slightly overlap the edges.



Step 4:
 Sew 5x **IP6** onto the empty centre
 of the sieve. Sew each one on separately.
 Try to lay them in a regular circle.
 Sew on one bronze **R6** (59145) between
 them from the side of the leaves.
 Sew 6x gold **R10** (18581) to the leaves
 behind the gold bead. Thread the line
 through one bronze **R** and go to the others.
 Sew the **R6** onto the centre of the sieve
 on the stems made of bronze **R10** (59145)
 and repeat this a total of 3x. Thread the line
 from the bottom through a hole in the sieve,
 string 4x **R10**, add 1x **R6** and thread the line
 back through the 4x **R10** and the hole
 in the sieve.



Step 5:
 Tidy up all of the lines on the bottom
 of the sieve. Tie them together and cut
 them off. None of them should extend
 beyond the edge of the sieve.
 Attach the lower section with the brooch
 clasp. Fold over the protruding metal
 prongs. Place the lower section on the sieve
 and fold over the prongs until they squeeze
 against the sieve. Try using the point
 of the closed scissors or the pliers.
 Or glue the lower section onto the lower
 section without using the prongs.

Cut a piece of ribbon and melt the ends.

Thread the ribbon under the brooch clasp
 and tie it in a bow behind your neck.
 This creates an excellent necklace for all
 social occasions.

