



Step 15:  
String the 5<sup>th</sup> bead.  
Create a loop from 6x R.  
Sew through the strung Ch up to the 2<sup>nd</sup> bead.  
Add the 6<sup>th</sup> bead.  
Create a loop from 4x R. Sew it in.  
Hang an earring hook and an eye-pinned bead.

### Earrings

Proceed similarly as in the case of the bracelet.



Step 14:  
String 4x Ch (Step 1 - 3 for the bracelet).



*Design by Helena Chmelíková*

#### PRECIOSA Chilli™

111 01 357; 4 x 11 mm



#### PRECIOSA Rocailles

311 19 001; 10/0



*Preciosa Ornela introduces beads and seed beads from the PRECIOSA Traditional Czech Beads™ brand.*

Preciosa-Ornela.com



BRACELET AND EARRINGS MADE FROM PRECIOSA CHILLI™

# Cob

PRECIOSA

# Cob

*Preciosa Ornela presents the PRECIOSA Chilli™ Pressed Bead from the PRECIOSA Traditional Czech Beads™ brand. This extended imaginative shape supplements the popular range of two-hole beads. The axially misaligned placement of both holes means that these beads are easily placed in the form of a cob during stringing, as the protrusions on the beads slide excellently into the dimple on the side of the adjacent bead. This new bead is suitable for all types of surface finishes. Choose a suitable color combination and try creating a relatively simple, but highly interesting bracelet or attractive earrings. It is sure to become your favourite costume jewelry accessory.*

## Materials and tools:

### PRECIOSA Chilli™ (Ch)

111 01 357; 4 x 11 mm;  
red with a lustre;  
any arbitrary color;  
the bracelet: 60x ; the earrings: 6x



### PRECIOSA Rocailles (R10)

311 19 001; 10/0; 93170;  
red or a similar color  
to the Chilli; 10x (loops)



### PRECIOSA Pressed Bead

111 30 451; 15 x 6 mm; 90080;  
red or a similar color  
to the Chilli; 2x



- carabiner; a 7 cm adjusting chain;  
5 - 6 mm rings; earring hooks; long eye pins  
a thin needle; a 0.20 mm nylon line;  
flat nose pliers (flattening the end  
of the line, closing the rings);  
snipping pliers



**Difficulty:**

**Technique:** beadweaving

## Procedure:

The Chilli beads are two row beads.  
They have one hole at the edge

of the bead, while their second hole is  
closer to the centre of the bead.  
They are highly textured. A ridge extends  
on one side and there is a corresponding  
dimple on the other side.

### The bracelet

#### Step 1:

String the first **Ch** through the outer hole  
on the ridge. Secure the **Ch**. Thread the end  
of the line through the hole once again.

#### Step 2:

Also string the second **Ch** from the ridge,  
but using the second hole.  
Also thread the line through the outer hole  
in the dimple. Exit with the line  
in the direction from the ridge.

#### Step 3:

String through the outer hole on the ridge  
of the third **Ch**. Also string the fourth **Ch**  
from the ridge, but via the central hole.  
Also thread the line through the outer hole  
in the dimple. Exit with the needle in the  
direction away from the ridge.

#### Step 4:

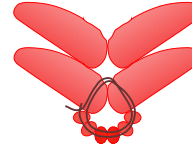
Repeat Step 3 with new beads until you  
have strung 58x beads (29 pairs of beads).  
The **Ch** will arrange themselves in the form  
of a „V“ in the opposite direction  
of the stringing.

#### Step 5:

String 59th **Ch** through the outer hole from  
the ridge.

#### Step 6:

Create a rocaile loop. String 6x **R10**.  
Thread the line through the adjacent 58<sup>th</sup>  
**Ch**. Thread the line through its outer hole  
in the dimple. Return to the 59<sup>th</sup> bead.  
Once again, thread the line through  
the loop from the **R10**, the 58<sup>th</sup>  
and 59<sup>th</sup> beads.



#### Step 7:

Also thread the line through the central  
hole in the dimple. Thread the line through  
the outer hole from the dimple in the bead  
above it (the 56<sup>th</sup> bead).

#### Step 8:

Thread the line through the outer hole on  
the ridge of the adjacent **Ch** (the 57<sup>th</sup> bead).  
Also thread it through the central hole  
in the dimple. Thread the line through outer  
hole in the dimple of the **Ch** above it  
(the 54<sup>th</sup> bead).

#### Step 9:

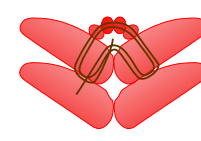
Repeat Step 8 up to the 2nd and 3<sup>rd</sup> beads.  
This will give rise to lines of **Ch**, left and  
right. Alternate them during sewing.

#### Step 10:

Add the 60<sup>th</sup> bead. String it through  
the outer hole in the dimple.  
Thread the line through the outer hole on  
the ridge 1x. Then thread it through  
the central hole in the dimple.

#### Step 11:

Create a rocaile loop. String 4x **R10**.  
String the 60<sup>th</sup> **Ch** through the central hole  
on the ridge. Also thread the line through  
the outer hole of this **Ch** from the dimple.  
Thread the line through the outer hole on  
the ridge of the adjacent **Ch**, as well as  
through the central hole in the dimple (1x).  
Once again thread the line through the **R10**  
and through both holes of the 60<sup>th</sup> bead.

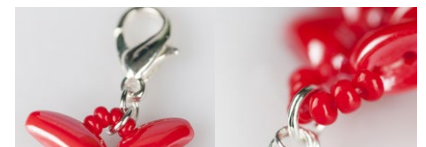


#### Step 12:

Release the secured first bead. Tie off both  
ends of the line. Sew it in and pull it into  
the surrounding **Ch**.

#### Step 13:

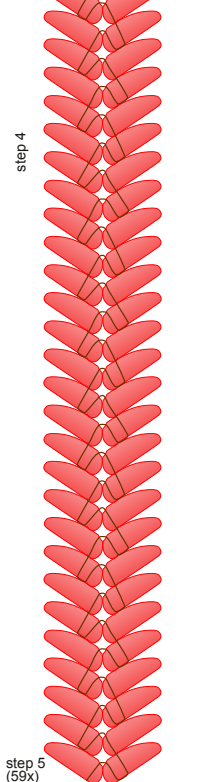
Connect the fastening using the rings.  
Connect a carabiner with two rings on one  
end. Connect both ends of the adjusting  
chain to the ring on the opposite end.



### step 1 - 5

step 3  
(3 and 4x)

step 1  
(1x)  
step 2  
(2x)



### step 7 - 9

step 9

step 7  
(59 and 56x)

step 8  
(57 and 54x)

step 5  
(59x)