



DESIGN BY HELENA CHMELÍKOVÁ



PRECIOSA ORNELA introduces seed beads and beads from the PRECIOSA Traditional Czech Beads brand.



CARIBBEAN CRUISE

INSTEP DECORATION



BEAD SHOP ZÁSADA
468 25 Zásada
+420 488 117 743
beadshop@preciosa.com
50°41'49 N, 15°15'55 E

GLASS SHOP DESNÁ
Krkonošská, 468 61 Desná
+420 488 117 525
glassshop@preciosa.com
50°45'41 N, 15°19'7 E

preciosa-ornela.com
facebook.com/PreciosaOrnela

August 2013 © PRECIOSA ORNELA, a.s.

This piece of untraditional costume jewelry with small stars in its central section has been created using beads and seed beads in a color combination corresponding to the PRECIOSA ORNELA color trends for spring and summer 2013.

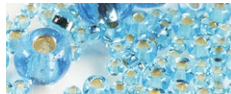
The main colors are sulphur yellow, purple, clear aquamarine, false topaz, hyacinth, scarlet and coral orange.

Materials and Tools:

- PRECIOSA Twin™ (T)
321 96 001; 2.5 x 5 mm;
B7715 (40x)
B7717 (40x)
78386 (40x)
B8702 (40x)
B6702 (40x)



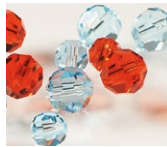
- PRECIOSA Rocailles (R)
331 29 001;
10/0; 67000 (84x)
6/0; 67000 (237x)
33; 67000 (2x)



- 331 19 001;
10/0; 08286 (120x)
08298 (120x)



- PRECIOSA MC Bead Round - Regular Cut (MCB)
451 19 602;
8 mm; 90040 Sun (3x)
60000 Aquamarine (2x)
6 mm; 90040 (4x)
60000 (2x)



- Pins: 18 mm (6x), 20 mm (4x) – gold
Eye pins: 18 mm (7x) – gold
Counter ring – gold
Carabiner – gold
16 mm adjustable chain – gold

Hatter's elastic, thin and round (white, beige), 80 cm



Scissors, needle nose pliers, flat nose pliers, a thin stringing needle with a large eye, a thin thread, a 0.20 mm nylon line, a thin needle with a small eye for holding the line of the line)



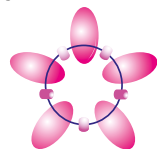
Difficulty: ●●●●●

Procedure:

First create the individual stars which will then be attached to the flexible stringing. This will create a highly effective and untraditional decoration for the insteps of bare feet.

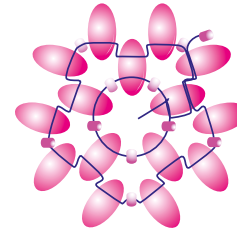
Step 1:
Start the individual stars by alternately stringing 1x T and 1x R10 onto the thin line. String a total of 5x T and 5x R10. Tie the strung seed beads into a circle, (figure no. 1 – the first row).

1.



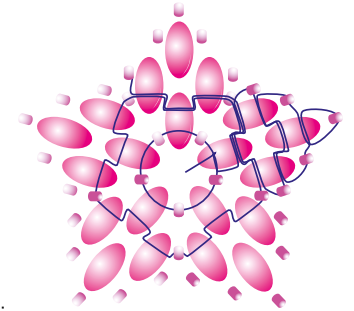
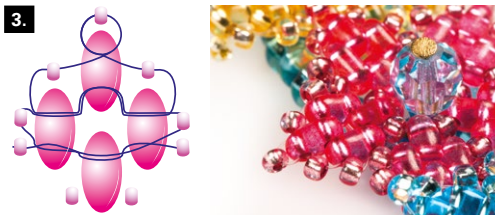
Step 2:
Thread the needle and the line through the second hole of the nearest T from the first row. In the second row, string 1x T, 1x R and 1x T above the rocailles and between the T from the first row; add a total of 10x T and 5x R10 in the second row, (figure no. 2 – row two).

2.



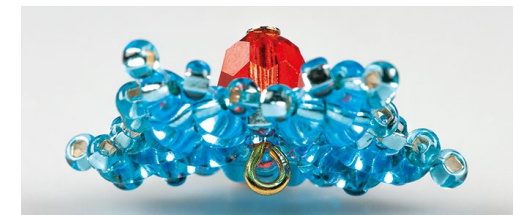
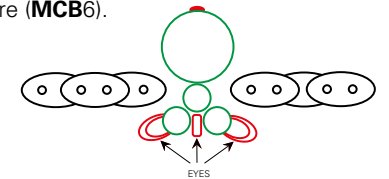
Step 3:
Now pass from one point of the star to the next one. Thread the needle and the line through three T lying next to one another in the second row. String 1x R10. Thread the needle and the line through the second hole of the outer twin. Add 1x T to the gap and thread the needle and line through the second hole of the side T. String 1x R10. Thread the needle and the line through the second hole of the middle twin. Add the missing rocailles onto the point. String 1x R10 and thread the needle and the line through the same hole, but from the opposite side. String 1x R10. Thread the needle and the line into the side T from the 3rd row and then thread it through the entire row. Add 1x R10 and thread the needle and the line into the second hole of the same T. String 3x T, 1x R10 and 3x T from the second row. Continue to the next point, (figure no. 3 – the points). There are 5 points on each star. Create 2 stars in each color shade.

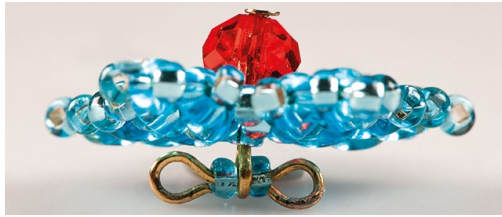
3.



Step 4:
String the cut MCB8/6 and 1x R10 onto the eye pin and create a loop. Place it in the centre of the star. String 1x R10 onto an eye pin, thread it through the created loop by the eye pin and add 1x R10. Create a loop. String the outer star directly onto the loop of the central eye pin (figure no. 4 – the linking detail). Connect the MCB8 to the yellow and pink stars (1x for each shade) and the MCB6 to the other stars: yellow and turquoise with orange and pink with turquoise. Place the star with the MCB8 in the centre of the instep decoration. The turquoise stars only have a 6 mm orange centre (MCB6).

4.





Step 5:

String the thin thread or line into the eye of the needle and tie it off. Create a loop and pass the elastic through it.

Start with the loop; string 40x **R6** onto the elastic. Pull out the elastic to a length of 20 cm on one side. Continue with the other section. Thread the elastic into the eye on the central eye pin (the turquoise star). String 7x **R6**. Thread the elastic through the eye pin's eye (the dark pink star). Add the next star (the yellow transparent star) and thread the elastic through the eye of the eye pin once more. String 7x **R6** again and add the matt yellow star.



Now, it is time to make the fastening. String 5x **R6**. Add the light pink star. Add 7x **R6** and the turquoise star. Once again string 7x **R6** and then the outer yellow matt star. String 7x **R6** and both ends of the adjustable chain. Begin the return to the centre. String 7x **R6**, the star and 7x **R6** between them. String 5x **R6** in the middle. Create the second side of the fastening. String the yellow transparent star and 7x **R6**. Continue with the dark pink star, 7x **R6** and the light pink outer star. String 1x **R6**, 1x **R33**, 14x **R6/0**, 1x **R33** and 7x **R6**. Add the counter ring and start the return. String the same number of beads, but in the opposite order. String the outer star and the next two stars with 7x **R6** between them. Add the section leading from the toes on the shorter end of the elastic. Thread the elastic through the outer star. String 7x **R6**, the pink star, 7x **R6**, the yellow star, 7x **R6** and the yellow star again. String 5x **R6** at the end, (figure no. 5 – the stringing detail). Gently tighten the elastic by means of gradual tugging. Tie both ends of the elastic with three knots and cut it off. Hide the knot and the end under the star. Connect the carabiner onto the counter ring using the ring. Create the second instep decoration in the same way, but as a mirror image. Swap over the sides with the fastening.

