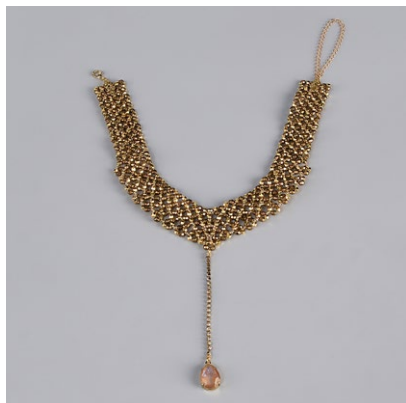


Step 16:
Connect a carabiner to the filigree loop
on the right-hand side of the necklace.
Attach 16 cm of adjusting chain
to the left-hand side.



The earrings

Create a „square“ out of G and B and with
R10 on the side. Thread the line through
it 2x. During the stringing, thread the line
through the eye on the butterfly clip and
the ring on a pendant with a stone.



TRADITIONAL
CZECH BEADS

Design by Helena Chmelíková

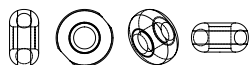
PRECIOSA Rocailles

331 19 001; 10/0



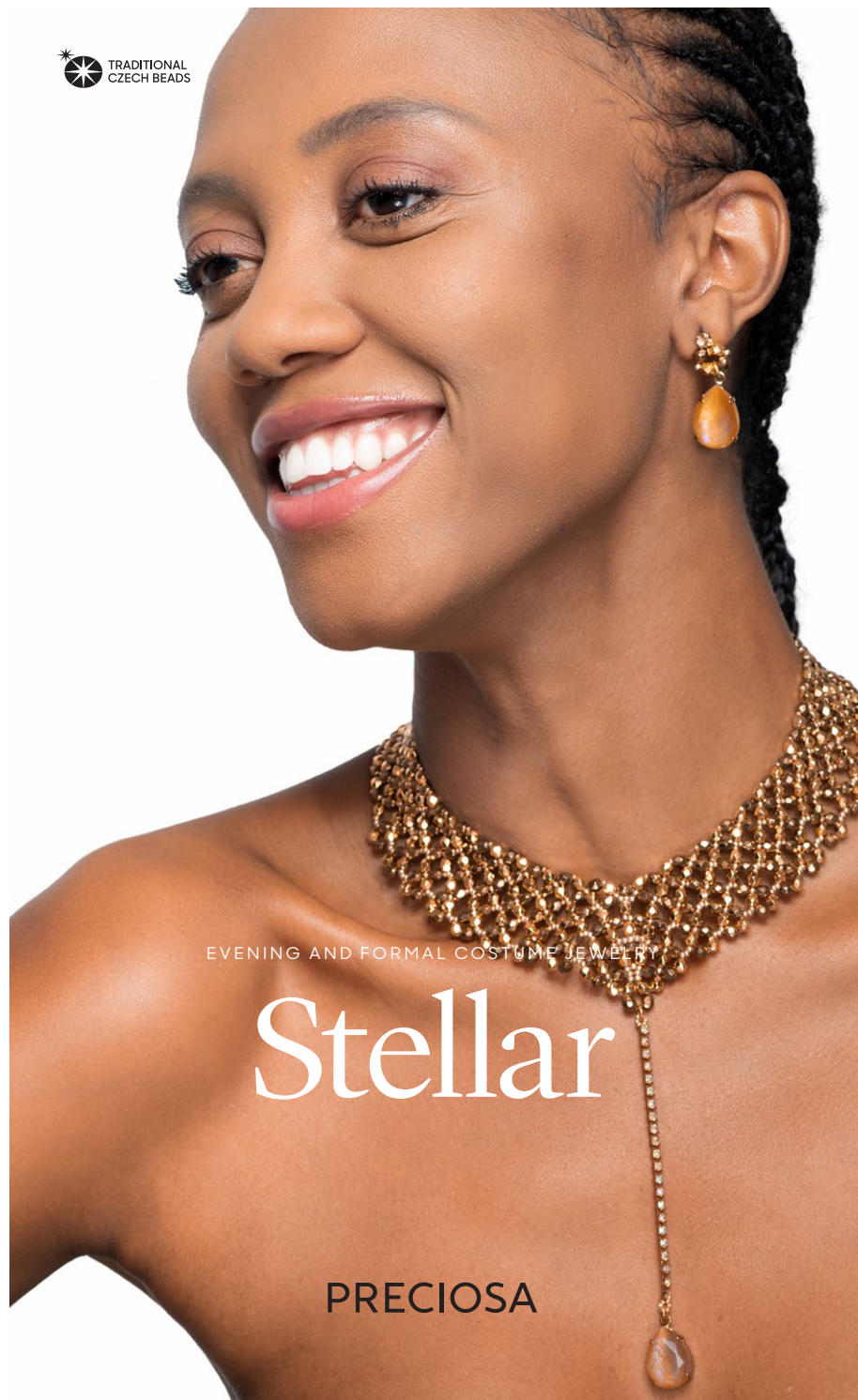
PRECIOSA Charlottes beads

361 11 001; 13/0



*Preciosa Ornela introduces beads and seed beads
from the PRECIOSA Traditional Czech Beads™ brand.*

Preciosa-Ornela.com



EVENING AND FORMAL COSTUME JEWELRY

Stellar

PRECIOSA

Stellar

Do you want to be the centre of attention at the ball? You are sure to be with this necklace! Here, we offer a tutorial for an exclusive piece of jewelry made using beads and seed beads from the PRECIOSA Luxury Coating collection. Use beads and seed beads coated with real gold and your evening costume jewelry will become an unmissable sparkling accessory to any social occasion.

Materials and tools:

PRECIOSA Rocailles (R)
331 19 001; 10/0;
18583 gold; 5 g (R10)



PRECIOSA Charlottes beads
361 11 001; 13/0;
18583 gold; 5 g (R13)



PRECIOSA Fire Polished Beads (FPB)
151 19 001; 4 mm;
00030/68304 gold; 259x (G)



151 19 001; 4 mm;
23980/90215 bronze; 258x (B)



- a carabiner; an adjusting chain;
filigree pendants; 5 mm and 4 mm rings;
a chaton chain (preferably a larger size);
a pendant with a chain



- a 0.20 mm and 0.10 mm nylon line (loops
in the chaton chain); a thin needle; scissors;
glue for non-absorptive materials;
flat-nosed pliers; snipping pliers



Difficulty: ●●●●●

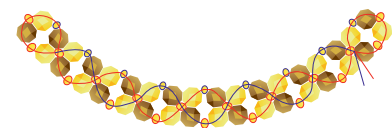
Technique: right angle weave stitch,
sewing, gluing

Procedure:

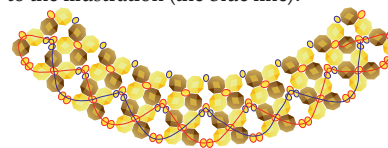
The arch

The **G** beads face in one direction and
the **B** beads face in the opposite direction.
The arch consists of three rows and nine
columns consisting of „squares“ made
of **G**, **B** and **R**. Use **R10** (the red line in
the illustration) and **R13** (the blue line in
the illustration).

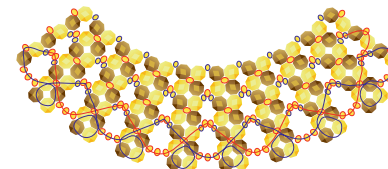
Step 1:
String the base for the 1st row according
to the illustration (the red line).
Thread the line through it or add
the remaining **G**, **B** and **R** according
to the illustration (the blue line).



Step 2:
String the base for the 2nd row (the red line)
according to the illustration.
Thread the line through it or add
the remaining **G**, **B** and **R** according
to the illustration (the blue line).



Step 3:
String the base of the base for the 3rd
row (the red line). Thread the line through
it or add the remaining **G**, **B** and **R**
according to the illustration (the blue line).
This row will be wider - squares made
of **G** and **B** are added to the outside.



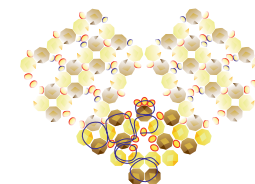
Step 4:
Sew the second arch.



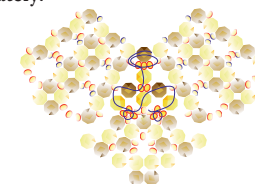
The middle

Turn the arches towards one another so
that they are a mirror image of one another.

Step 5:
Start sewing them together from the point
of the necklace. Place a „square“
in the middle of the line. Sew the left-
hand (the blue line) and right-hand parts
separately (sew the line as a mirror image).



Step 6:
Sew the upper section of the middle.
Start from the top **B**. Once again,
sew the left-hand and right-hand parts
separately.



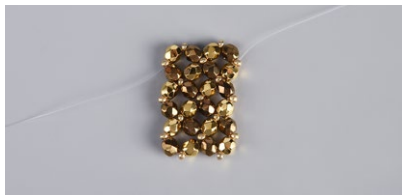
The straight section

The **G** beads face in one direction and the **B** beads face in the other direction. The section consists of three rows and ten columns consisting of „squares“ made of **G**, **B** and **R10**.

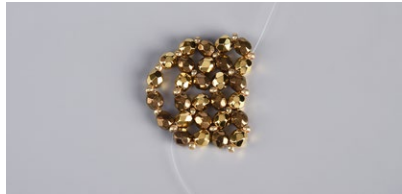
Step 7:
String the base of the 1st column (the narrower side). Thread or add the remaining **G**, **B** and **R10**.



Step 8:
String the base of the 2nd column. String or add the remaining **G**, **B** and **R10**.



Step 9:
String the base of the 3rd column. Thread or add the remaining **G**, **B** and **R10**.



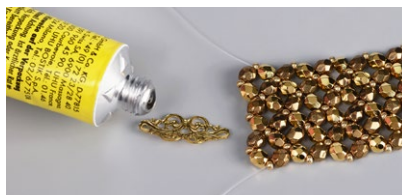
Step 10:
Alternate the same sewing method as in Steps 2 and 3.

Step 11:
Connect the straight section in the 10th column to the arch. Make sure that all the **G** and **B** are turned in the same way. Thread the line through the outer **R10** on the narrower side next to the arch.



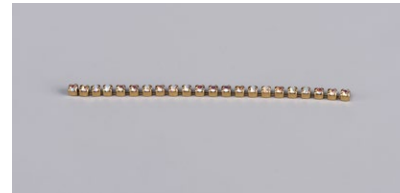
Gluing

Step 12:
Apply the glue to the filigree pendants. Attach them to the outer two „squares“ in the central row. Allow them to dry.



The chaton pendant

Step 13:
Snip off about 8 cm of chaton chain. The work will be easier for you, if you manage to extract the remainder of the connector from under the outer cup.



Step 14:
Create a loop on the ends of the chain. Adjust the amount of the threading and the force on the line to the size of the cups. It is advisable to thread the line using a needle.



Completion

Step 15:
Connect the chain to the point of the necklace using a ring. Connect the other end to the pendant with the stone.

