



Step 8  
To fasten your bracelet, pass the ribbon through the 2 end components and tie a bow. **Figure 8.**

Step 7  
Repeat step 6 to attach all components into a line making sure that all components are the same way up and hang in a straight line. **Figure 7.** Tie off and trim any remaining threads.



*Design by Kerrie Slade*

**PRECIOSA Pellet**  
111 11 339; 4 x 6 mm

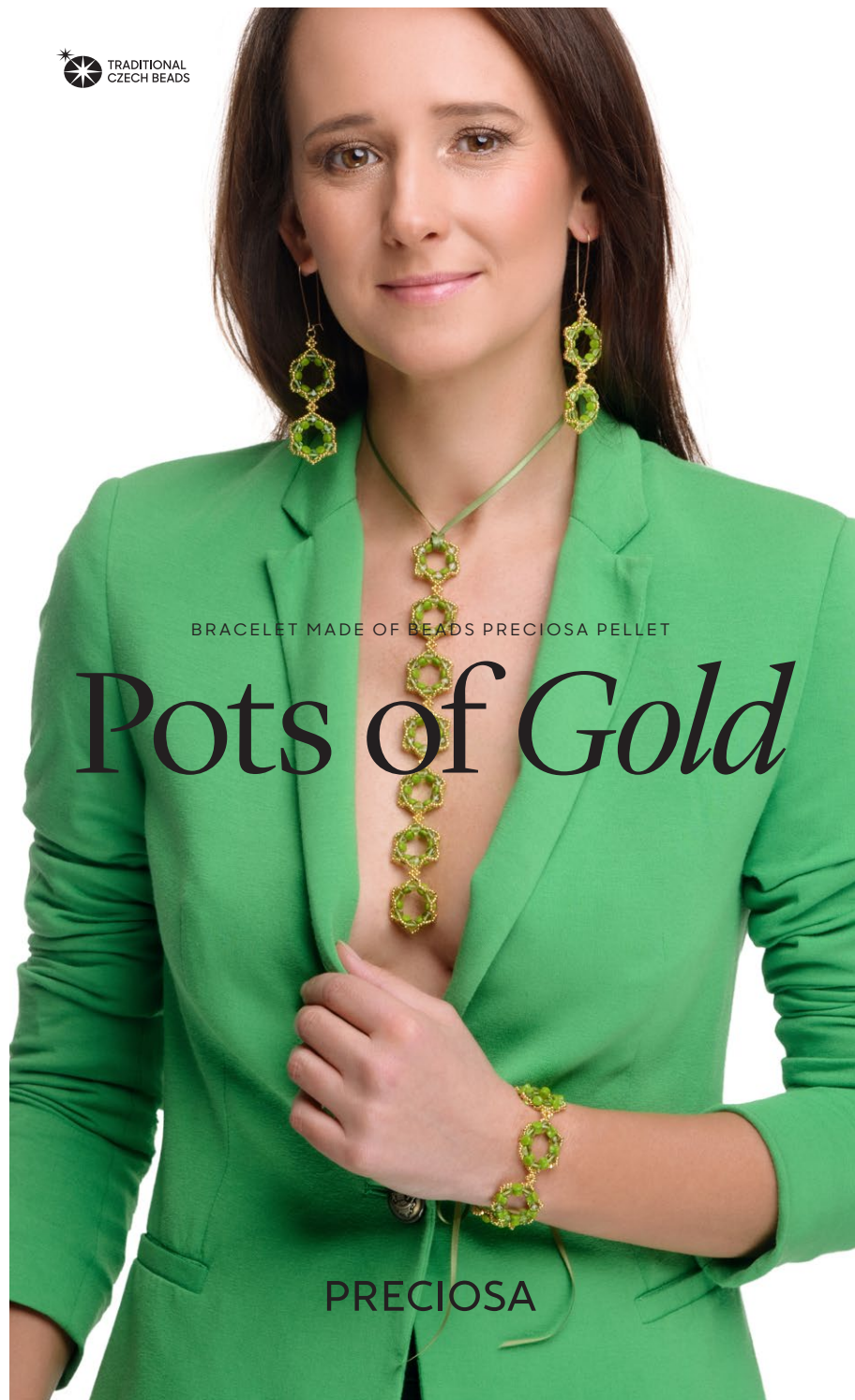


**PRECIOSA Cut Rocailles**  
361 11 001; 11/0



*Preciosa Ornela introduces beads and seed beads from the PRECIOSA Traditional Czech Beads™ brand.*

Preciosa-Ornela.com



BRACELET MADE OF BEADS PRECIOSA PELLET

# Pots of Gold

PRECIOSA

# Pots of Gold

*Celebrate St. Patrick's Day in style! Create this simple but elegant bracelet using PRECIOSA Pellet beads in traditional greens, finished with a sprinkling of sparkling cut rocailles to represent the leprechaun's fabled pot of gold.*

## Materials and tools:

PRECIOSA Pellet (PA)  
111 01 339 00; 4 x 6 mm;  
50220 olivine light; 36x



PRECIOSA Pellet (PB)  
111 01 339 00; 4 x 6 mm;  
53420 olivine opaque; 36x



PRECIOSA Cut Rocailles (R11)  
361 11 001; 11/0; 68304 gold; 5g



- beading thread to match your chosen beads, (Fireline 4lb crystal);  
size 10 to 12 beading needles;  
scissors;  
ribbon, 3 mm, 60 cm



**Difficulty:** ●●●●●

**Technique:** basic weaving

## Procedure:

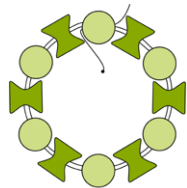
**Size:** The finished bracelet measures approximately 17 cm but can be made to measure.

**Note:** In the diagrams, beads with a black outline are the new beads being added, beads with no outline were added in previous steps.

## To make your first component:

**Step 1**  
Thread your needle with 85 cm of thread and pick up 1x PA and 1x PB 6 times. Leaving a 15 cm tail, pass through the first PA again to form a circle and then pass through all beads again. **Figure 1a.** Due to their shape, the P beads will nestle into each other's waists with half of them facing in one direction and the other half facing the opposite direction. **Figure 1b.**

1a.

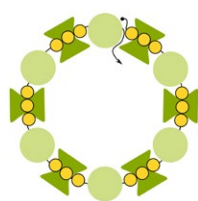


1b.



**Step 2**  
Add 3x R11 between each PA. **Figure 2a.** Ensure that the R11's curve around every PB and are all on the same side of your work. Retrace the thread path and finish by exiting a PA. **Figure 2b.**

2a.



2b.

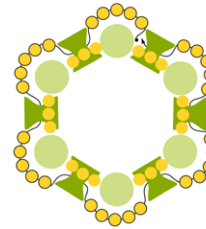


4b.



**Step 3**  
Turn and work in the opposite direction adding 5x R11 between each PB. Ensure that the R11's curve around every PA and are all on the outside edge of the circle. **Figure 3a and 3b.** Tie off and trim the tail thread only by tying 3 to 4 overhand knots between the PA and PB.

3a.

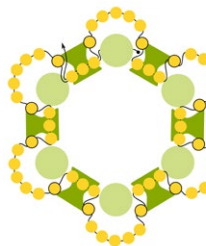


3b.



**Step 4**  
Working in the same direction, pass back through the next PA and the next 3x R11. Pick up 1x R11 and pass through the second set of 5x R11 added in the previous step. Pick up 1x R11 and pass back through the next set of 3x R11. Continue adding 1x R11 between each set of 5 and 3 giving a total of 12x new R11. Pull your thread firmly as you work so that the new beads click into place. **Figure 4a and 4b.**

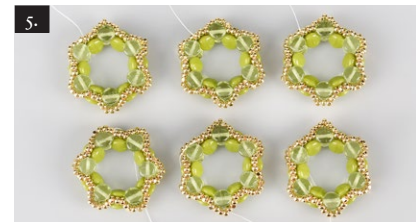
4a.



## To make your bracelet:

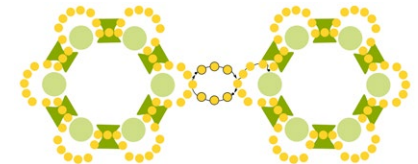
**Step 5**  
Following steps 1- 4, make another 5 components. **Figure 5.**

5.



**Step 6**  
Lay 2 components side by side. Using the working thread from 1 component, travel to exit the R11 shown. Pick up 3x R11 and pass through the corresponding R11 on the other component. Pick up 3x R11 and pass through the first R11 again. **Figure 6a.** Retrace the thread path except the middle R11 of each new group of 3 and pull your thread so that the middle bead pops up to form a point. **Figure 6b and 6c.** Tie off and trim the thread.

6a.



6b.

