



Design by Carla Ruvolo

PRECIOSA Two-Cuts

351 31 001; 10/0



PRECIOSA Rocailles

331 19 001; 10/0



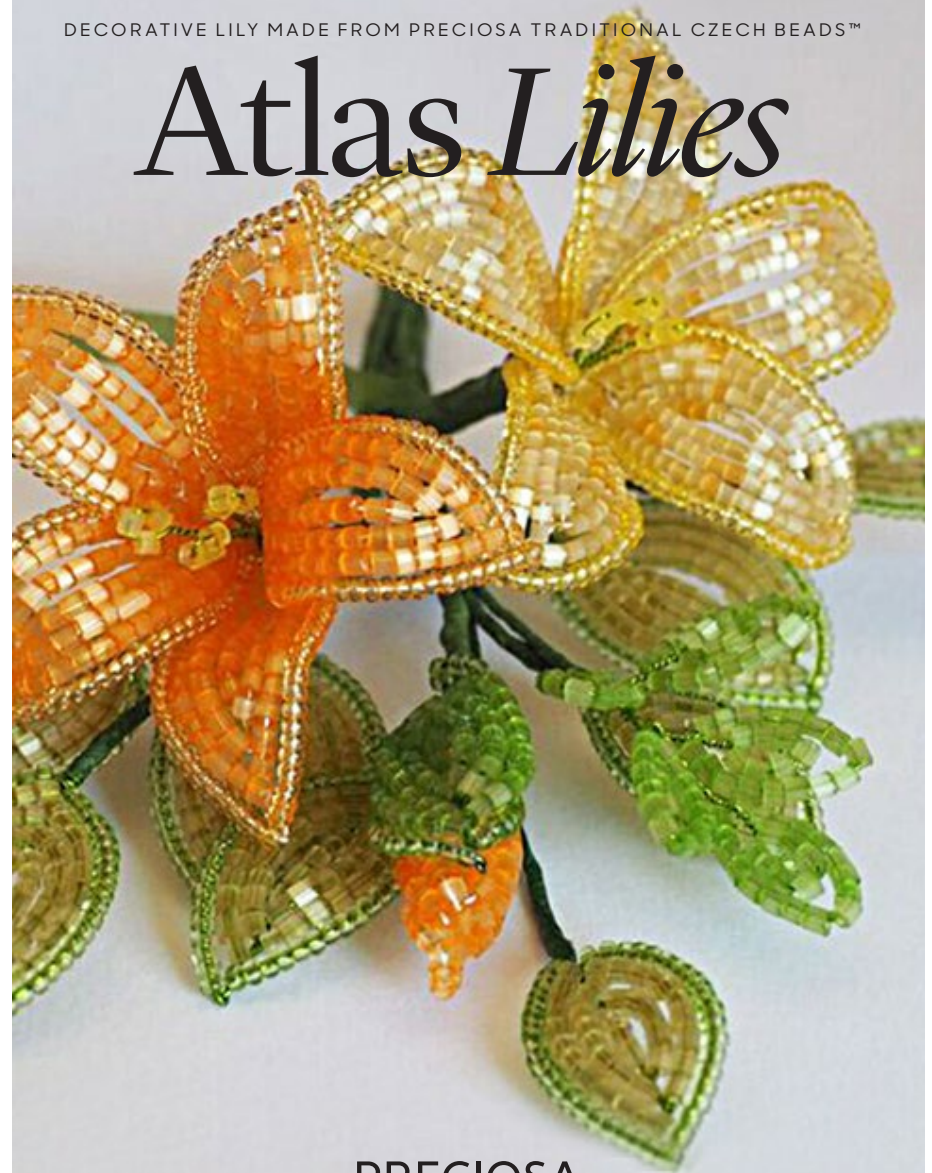
*PRECIOSA ORNELA introduces beads and seed beads
from the PRECIOSA Traditional Czech Beads™ brand.*

preciosa-ornela.com



DECORATIVE LILY MADE FROM PRECIOSA TRADITIONAL CZECH BEADS™

Atlas Lilies



PRECIOSA

Atlas Lilies

We bring you this project, designed by Carla Ruvolo, for a delicate decorative floral element made of PRECIOSA Traditional Czech Beads™ and seed beads.

Preciosa Ornela manufactures the widest product range of glass seed beads in the world.

One of the most colorful finishes we offer is Solgel, with thirty different shades that all come in three different color intensities. Our Solgel colors can be used on your choice of crystal, silver-lined crystal, alabaster and chalkwhite beads. The hexagonal PRECIOSA Two-Cut, made from satin glass, transforms spectacularly with Solgel. Applied to the uniquely airy white satin glass, Solgel adds a luxurious element to the seed bead product range by imbuing the glass with a silk-like appearance and shine.

Materials and tools:

PRECIOSA Two-Cuts (T-C)

351 31 001; 10/0;
05681 yellow
05684 orange
05661 green

PRECIOSA Rocailles (R)

331 19 001; 10/0;
01681 yellow
01684 orange
78661 green

PRECIOSA Imitation Pearl (IM)

131 19 001; 4 mm; 70402 white

0,50 mm and 0,30 mm copper wire;
2 mm Craft wire; pliers and wire cutters;
floral tape

Difficulty: ● ● ● ● ●

Procedure:

Making the accent leaves



On 0,30 green wire, load approximately 10 cm T-C atlas green, a few IMs or FPBs, and 10, 12 cm green R.



Using the continuous wraparound technique, make a tiny loop using 9 R.



Make a second larger loop.



Gently pinch the top of the second loop to achieve a pointed leaf.



Repeat the previous step to make more tiny leaves.



Make several tiny stems using IMs or FPBs at your choice between the leaves.



You can make one or more accent leaves.



Making the leaves

Basic Frame Technique



Load 0,50 green wire with T-C.



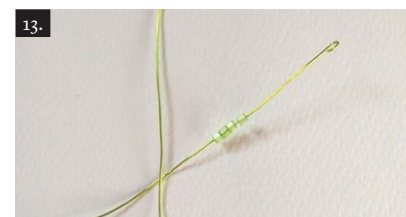
Make a tiny loop on the top.



Slide four T-C (this will be the first basic row).



Make a loop on the bottom, under the T-Cs.



Twist a few times, slide some T-Cs on the working wire.



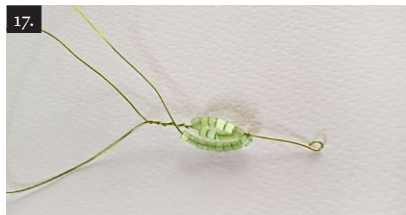
Make the second row wrapping the working wire around the center wire. Use the amount of T-Cs needed to reach the top of the previous row. The angle of the wire as you wrap will change the shape of your leaf. If you want a pointed leaf keep the angle of the wire at 45 degrees while you wrap it around the center wire.



Slide some T-Cs to the top where you just make the wrap.



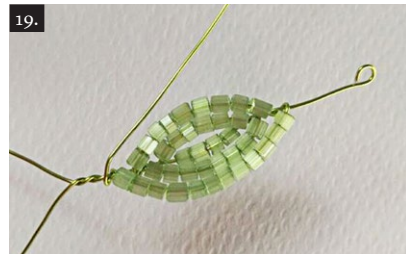
Wrap the working wire at the base of the first rows (keep an angle of 45 degrees to achieve a pointed bottom leaf). Now you have 3 completed rows.



Repeat the steps to make the fourth row.



Complete the fifth row.



Remove any leftover T-C from the working wire and load approximately 10 cm of R and make 2 more rows.



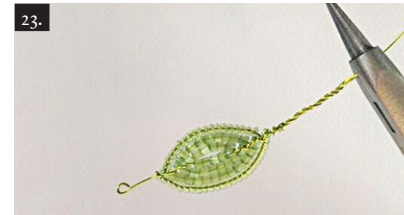
This will give to your leaf a more complete look.



Twist a few times to secure the rows and cut the working wire.



Twist wires together (a plier will help you to achieve a nice twist).



Cut the top wire leaving 5-6 mm.



Using pliers, bend the top wire on the back of the leaf.



The Lily

We can use the same technique to make the petals of the flower. String the wire with Atlas 2-cut beads. Leave approx 7 beads on the core wire.



Make the second row by crossing the wires with a 45° angle at the top and bottom of the petal.



Make 7 rows of Atlas 2-cut beads and then string the wire with matching Sol-gel colour seed beads.



Create the final 2 rows. Secure the wires on the bottom of the petal (similarly to the leaves). Cut the tip of the core wire, bend it and hide it behind the bead.



Make 5 petals using the same number of core beads (The petal shape depends on the number of beads on the core wire, the number of rows and the angle of the wire crossing at the top and the bottom). Increase the number of core beads and the number of rows for larger petals.



Make 5 more petals in another colour.



Make the stamens using yellow 2-cut Atlas beads.



To assemble the flower, connect the first petal with the stamen using the 0.30 mm wire.



Add the second petal so that it slightly overlaps the first.



Continue adding petals. Secure them with the wire after each addition.



Shape the petals and adjust the flowers. Wrap the stems with the green floral tape.



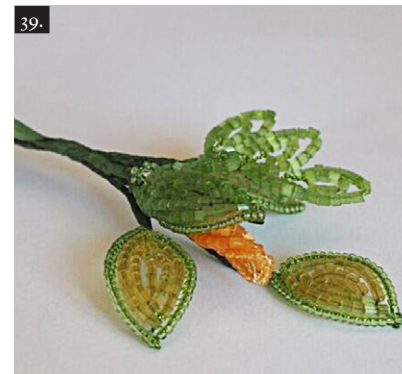
In order to assemble a bouquet, create some decorative accents, leaves and flowers. Wrap every stem with green floral tape.



Begin assembling the smaller leaves with accent decorations (you can use pearls and fire polished beads to add a sparkle to your bouquet).



To make a bud, simply make an extra petal, wrap it on itself, add a leaf and shape it as a sepal wrapping it around the bud. Secure the wires and wrap it with the floral tape.



Add the bud to the smaller leaves.



Bend the flower stems and add the flowers. Secure them with the 0.30 mm wire and then wrap wires with the floral tape.



Add more leaves at the sides and on the bottom of the flowers. Shape the leaves and the flowers.



Play with the elements, colours and bead finish to create different designs.